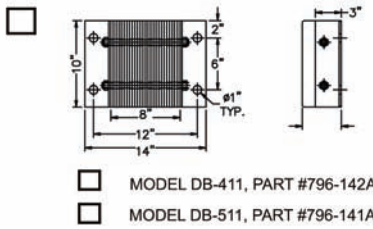


LAMINATED

MOLDED



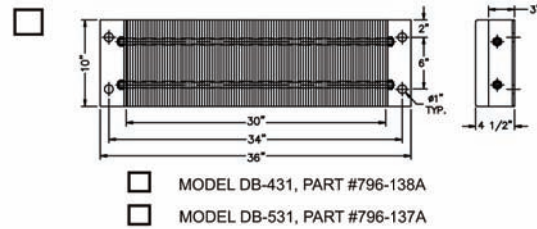
SPECIFY THICKNESS

- 4.5" Thick
- 5.5" Thick

OPTION:

- Steel Face

- MODEL DB-411, PART #796-142A
- MODEL DB-511, PART #796-141A



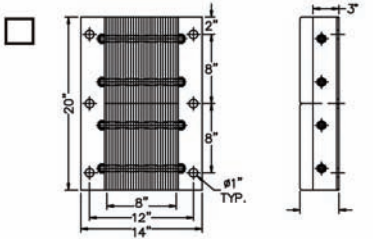
SPECIFY THICKNESS

- 4.5" Thick
- 5.5" Thick

OPTION:

- Steel Face

- MODEL DB-431, PART #796-138A
- MODEL DB-531, PART #796-137A



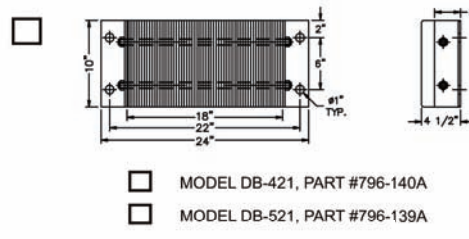
SPECIFY THICKNESS

- 4.5" Thick
- 5.5" Thick

OPTION:

- Steel Face

- MODEL DB-412, PART #796-136A
- MODEL DB-512, PART #796-135A



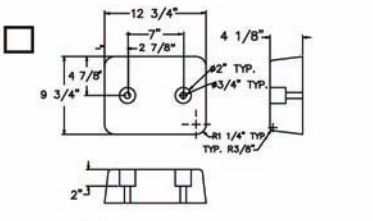
SPECIFY THICKNESS

- 4.5" Thick
- 5.5" Thick

OPTION:

- Steel Face

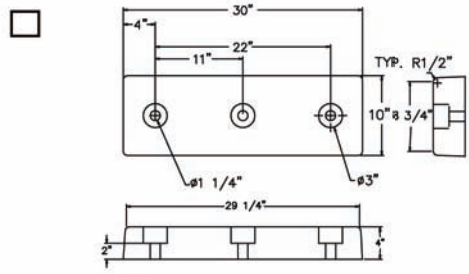
- MODEL DB-421, PART #796-140A
- MODEL DB-521, PART #796-139A



OPTION:

- Steel Face

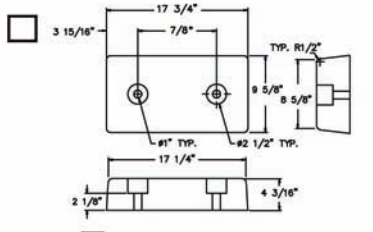
- MODEL DB13, PART #110-886



OPTION:

- Steel Face

- MODEL DB30, PART #090-821



OPTION:

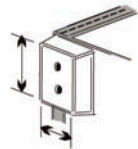
- Steel Face

- MODEL DB18, PART #090-600

STEEL FACE FOR LAMINATED BUMPER

STEEL FACE FOR MOLDED BUMPER

G - STANDARD - CURB ANGLE DETAIL



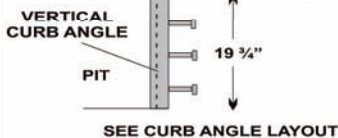
BUMPER SIZE

(NOMINAL)
 WIDTH _____
 HEIGHT _____
 PROJECTION _____

Standard Bumper Selection

- Blue Giant Supplied Molded Bumpers; Two (2) DB413 (4.5 D x 10 W x 13 H)
- Blue Giant Supplied Laminated Bumpers; Two (2) DB411 (4.5 D x 14 W x 10 H)

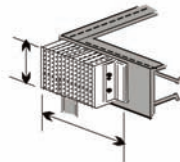
ANCHOR LAYOUT



SEE CURB ANGLE LAYOUT

GOOD

G1 - ALTERNATE 1 - PLATE MOUNTING DETAIL

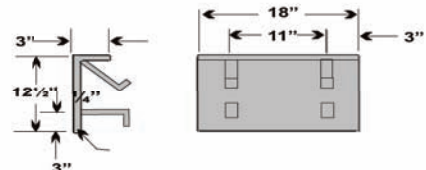


BUMPER SIZE

(NOMINAL)
 WIDTH _____
 HEIGHT _____
 PROJECTION _____

Note: Mounting Plate(s) Provided By Others.

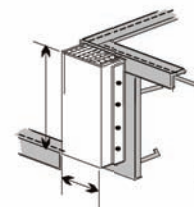
ANCHOR LAYOUT



STEEL FACE BUMPERS RECOMMENDED FOR HIGH TRAFFIC APPLICATIONS

BETTER

G2 - ALTERNATE 2 - PLATE MOUNTING VERTICAL DETAIL

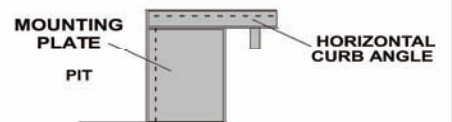


BUMPER SIZE

(NOMINAL)
 WIDTH _____
 HEIGHT _____
 PROJECTION _____

Note: Mounting Plate(s) Provided By Others.

ANCHOR LAYOUT



VERTICAL BUMPERS RECOMMENDED FOR AIR RIDE TRAILER APPLICATIONS DUE TO TRAILER RISE AND FALL

BEST

Please Return All Submittal Approvals To Blue Giant Stamped/Signed And Dated

Initial _____ Date / /