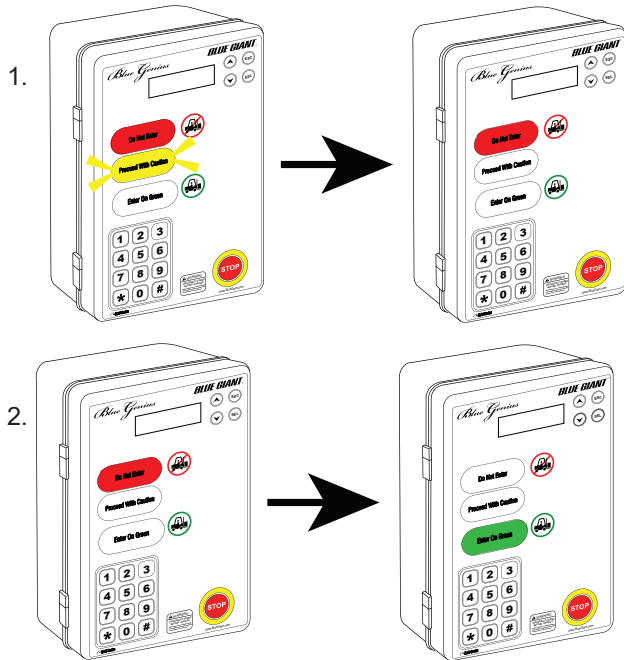


# OPERATING INSTRUCTIONS

Only for the Blue Giant Interlock Chock™

**A**



## PLACE WHEEL CHOCK

Standard and end loading follow the same procedure. Once the vehicle driver has placed the Interlock Chock, the Blue Genius Control Panel flashes AMBER.

1. Fully open the dock door.  
While the door is opening, Blue Genius Control Panel will illuminate solid RED.  
When the door is fully open, the Blue Genius Control Panel remains solid RED.

GOLD OR PLATINUM  
BG MENU DISPLAY  
SCREEN

READY TO RAISE DECK

2. Deploy dock.  
While dock deploying, Blue Genius Control Panel illuminates solid RED.  
When dock fully deployed, Blue Genius Control Panel illuminates solid Green.

GOLD BG MENU  
DISPLAY  
SCREEN

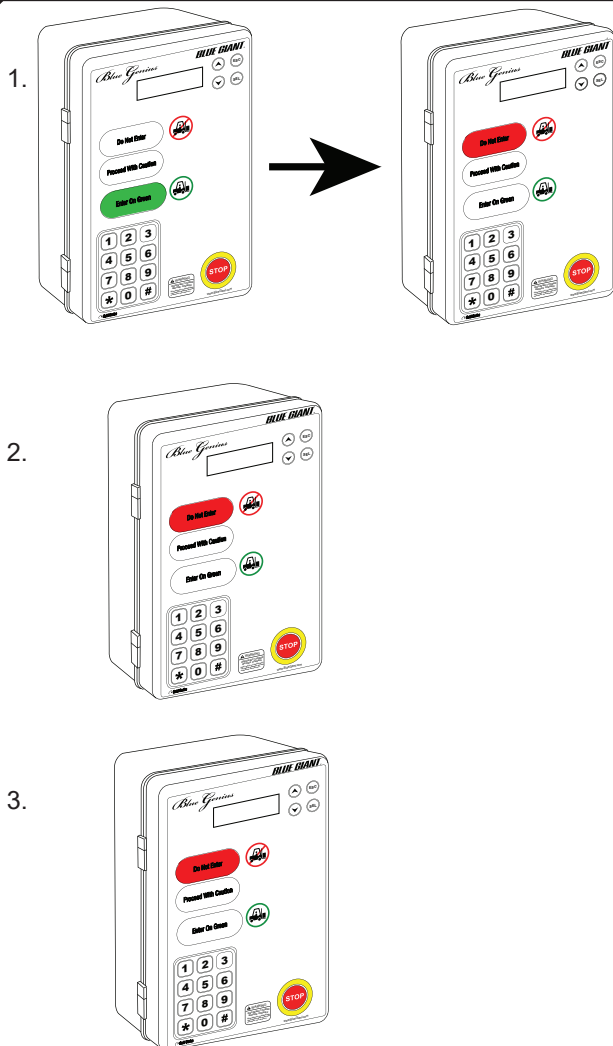
DECK DEPLOYED

PLATINUM BG  
MENU DISPLAY  
SCREEN

LEVELER READY

3. Proceed with loading or unloading.

**B**



## REMOVE WHEEL CHOCK

1. When loading or unloading is completed, restore dock to fully parked position.  
When the dock leaves the deployed position and is parked, Blue Genius Control Panel illuminates solid RED.

GOLD BG MENU  
DISPLAY  
SCREEN

WHEEL CHOCK  
IS ENGAGED

PLATINUM BG  
MENU DISPLAY  
SCREEN

CHOCK ENGAGED  
LEVELER RESTORED

2. Close door completely.  
Blue Genius Control Panel illuminates solid RED.

GOLD BG MENU  
DISPLAY  
SCREEN

READY TO RELEASE

PLATINUM BG  
MENU DISPLAY  
SCREEN

READY TO RELEASE  
WHEEL CHOCK

3. As driver restores chock, Blue Genius Control Panel illuminates solid RED.

GOLD BG MENU  
DISPLAY  
SCREEN

RESTORE WHEEL CHOCK

PLATINUM BG  
MENU DISPLAY  
SCREEN

READY TO RELEASE  
WHEEL CHOCK

4. Chock is back in cradle.  
Blue Genius Control Panel remains solid RED.

GOLD OR PLATINUM  
BG MENU DISPLAY  
SCREEN

BLUE GENI US READY