

OWNER & INSTALLATION MANUAL

STATIONARY AND SEMI-PORTABLE ELEVATING DOCKS



ACTUAL PRODUCT MAY NOT APPEAR EXACTLY AS SHOWN



WARNING

Do not operate or service this product unless you have read and fully understand the entire contents of this manual. Failure to do so may result in property damage, bodily injury or death.

BLUE GIANT[®]

STARTING FROM APRIL 2015

Stationary Elevating Docks: 4 - 12, 15, and 20,000 lb capacities

Semi-Portable Elevating Docks: 4,000 - 6,000 lb capacities

ISSUE DATE: OCTOBER 6, 2016 REV.0 (PART # 038-589E)

TABLE OF CONTENTS

1.0	OWNER’S PURCHASE RECORD	3
2.0	INTRODUCTION	3
2.1	WARRANTY INFORMATION	3
2.2	EXCLUSION OF LIABILITY	4
2.3	MANUFACTURER’S NOTE	4
2.4	OWNER’S RESPONSIBILITY	4
3.0	OPERATOR’S MANUAL SAFETY MESSAGE COLOR IDENTIFICATION	5
3.1	OPERATIONAL SAFETY WARNINGS	5
4.0	LOCKOUT / TAGOUT PROCEDURE AND RULES	6
5.0	HANDLING AND INSTALLATION INSTRUCTIONS	7
5.1	INSTALLATION INSTRUCTIONS	8
6.0	MAINTENANCE DEVICE DETAIL	10
6.1	SAFETY INFORMATION - OWNER’S RESPONSIBILITIES	10
6.2	SAFETY INFORMATION - OPERATOR’S RESPONSIBILITIES	10
7.0	WARNING PLACARD	11
8.0	OPERATING INSTRUCTIONS	12
9.0	PLANNED MAINTENANCE	13
9.1	TROUBLESHOOTING GUIDE	13
9.2	SERVICE MAINTENANCE HISTORY	14
9.3	STATIONARY ELEVATING DOCK - LUBRICATION POINTS	15

1.0 OWNER’S PURCHASE RECORD

OWNER’S PURCHASE RECORD
Please record information for future inquiries and to validate warranty. (See Section 2.1 for warranty validation)

Dealer: _____

Date in Service: _____

Number of Units: _____

Serial Number: _____

Door # _____

Serial Number: _____

Door # _____

Serial Number: _____

Door # _____

Serial Number: _____

Door # _____

Serial Number: _____

Door # _____

2.0 INTRODUCTION

The following is a quick reference to important procedures that must be followed while using the Vehicle Restraint System. It is not intended to cover, or suggest that it does cover, all procedures necessary to ensure safe operation. All operators should be aware of and abide by all workplace safety regulations applicable to the operation of the Vehicle Restraint System. These laws and regulations include but are not limited to:

- The Occupational Safety and Health Act
- Canada Occupational Health and Safety Regulations
- Occupational Safety and Health Acts for Individual States (USA)

For additional information on these regulations as well as industry standards that may apply to this product, please contact:

American National Standards Institute (ANSI)
1430 Broadway
New York, NY 10018
Telephone: 212.642.4900
www.ansi.org



Also a member of:

Loading Dock Equipment Manufacturers
A Product Section of Material Handling Industry of America
A Division of Material Handling Industry
8720 Red Oak Blvd, Suite 201
Charlotte, NC, 28217-3992
Telephone: 704.676.1190
www.mhi.org/lodem



2.1 WARRANTY INFORMATION

Thank you for purchasing Blue Giant products. We appreciate your business, and are confident that our product will serve you for many years to come. In the event that you experience a problem with our product, our Warranty Center is here to support the Blue Giant Product(s) that you have purchased.

To validate warranty on recently purchased equipment, please complete and submit your information with our on-line Warranty Registration at www.BlueGiant.com.

For more information about Blue Giant Warranty Support, please contact your local Blue Giant Equipment dealer, representative or authorized partner near you. You may also visit www.BlueGiant.com or phone 1.905.457.3900.

DEALER INFORMATION

Name: _____

Contact: _____

Telephone: _____

* **NOTE** that failure to validate warranty at the time of receipt can seriously affect the outcome of any claim.

2.2 EXCLUSION OF LIABILITY

The manufacturer assumes no liability for damage or injury to persons or property which occur as a result of defects or faults in or incorrect use of the Vehicle Restraint System. The manufacturer also assumes no liability for lost profits, operating downtimes, or similar indirect losses incurred by the purchaser. Injury to third parties, irrespective of its nature, is not subject to compensation.

The manufacturer reserves the right to make changes at any time to the modules, components, and accessories, concurrent with its continuing product improvements and development program. Specifications, operating instructions, and illustrations included in this manual are subject to change without notice. Please contact manufacturer for the latest information.

2.3 MANUFACTURER'S NOTE

The Vehicle Restraint has been carefully inspected and tested at the manufacturer's plant prior to shipment, but should be checked upon receipt for transport damage. Any observed transport damage is to be listed on the signed copy of the freight document. Notify the freight forwarder of any damage WITHIN 48 HOURS.

2.4 OWNER'S RESPONSIBILITY

1. The owner should recognize the inherent danger of the interface between the dock and the freight carrier. The owner should, therefore, train and instruct operators in the safe use of the dock equipment and accessories in accordance with the manufacturer's recommendations.
2. The owner should thoroughly familiarize themselves with the following procedures and specifications, and request immediate replacement of all manufacturer-supplied documents that are missing, damaged, or otherwise illegible.
 - Installation instructions
 - Operating instructions
 - Planned maintenance procedures
 - Inspections procedures
 - Replacement parts lists

Upon receipt of any newly purchased dock equipment, the owner shall verify the presence of owner's manuals, operating placards, and any other documentation necessary for training dock personnel how to use the equipment safely and effectively.

3. Manufacturer's recommended periodic maintenance and inspection procedures shall be followed, and written records of the performance of these procedures should be kept as per warranty guidelines.

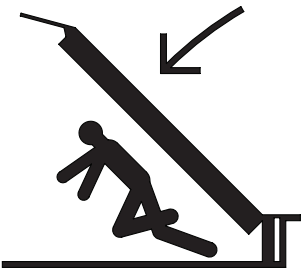
4. Dock equipment that is structurally damaged, experiencing performance irregularities, or has been potentially compromised (i.e. sudden loss of support due to premature truck departure) shall be removed from service until a trained and authorized manufacturer's representative can conduct an inspection and perform any necessary repairs.
5. As with any piece of machinery, dock equipment requires routine maintenance, lubrication, and adjustments. Your local Blue Giant® representative offers owners the option of a Planned Maintenance Program (P.M.P.). As part of this service, your local Blue Giant® representative will do all routine maintenance, lubrication, and adjustments.
6. The owner shall ensure that all nameplates, caution/instruction markings or labels are in place and legible, and that the appropriate operating/maintenance manuals are provided to authorized users. Replacement name plates, caution/instruction labels, and manuals containing operating and maintenance instructions are available through the Blue Giant Aftermarket Department. See Section 11.0 "*Decal Identification and Location*" for more information.
7. Modifications or alterations of dock equipment shall be made only with written permission of the original manufacturer. These changes shall also satisfy all safety recommendations of the original equipment manufacturer for the particular application of the dock equipment.
8. The owner or a trained and authorized representative shall verify that all freight carrier brakes have been applied and a vehicle restraint and/or wheel chocks properly engaged before cross-docking procedures such as loading and unloading begin.
9. Unless specifically agreed to in writing by Blue Giant Equipment Corporation at the time of order (and prior to manufacture), all Blue Giant Dock equipment is sold as a complete offering, and must not be altered or added to in any manner (which includes configuration and function) without written permission from an authorized manufacturer's representative.
10. If, at the request of the owner, Blue Giant does not supply all or some of the dock equipment power unit and/or control panel components, the owner shall assume responsibility for any and all operational and safety issues associated with the resulting configuration.

3.0 OPERATOR’S MANUAL SAFETY MESSAGE COLOR IDENTIFICATION

This manual includes color-coded safety messages that clarify instructions and specify areas where potential hazard exists. To prevent the possibility of equipment damage and serious injury or death, please observe strictly the instructions and warnings contained in the messages. If warning decals become damaged or missing, replace them immediately. Avoid accidents by recognizing dangerous procedures or situations before they occur.

⚠ DANGER	NOTICE
Serious injury or death will likely occur if the instructions are not followed.	Procedures marked notice must be followed in order to prevent damage to machinery.
⚠ WARNING	⚠ CAUTION
Serious injury or death may occur if the instructions are not followed.	Instructions marked caution concern safe operating procedure. Failure to comply may result in personal injury.

3.1 OPERATIONAL SAFETY WARNINGS


⚠ DANGER	
<p>CRUSH HAZARD</p> 	<ol style="list-style-type: none"> 1. Do not operate leveler with anyone standing in its path. 2. Do not service leveler unless the maintenance stand is properly engaged. See SECTION: ENGAGING MAINTENANCE STRUT 3. BEFORE BEGINNING ANY SERVICE PROCEDURES: Position the dock leveler in the vertically stored position. Disconnect the power and follow all lockout / tagout procedures in this manual. 4. Do not operate leveler without following the procedure below if the leveler has not been in service for an extended period of time. 5. PROCEDURE FOR FILLING CYLINDER: Touch and hold the 'UP' button (Run Pump) to operate for (35) seconds

⚠ WARNING	NOTICE
<ol style="list-style-type: none"> 1. Keep away from hinge when operating leveler. 2. Post safety warnings and barricade working area at dock level and at ground level to prevent unauthorized use of the dock leveler during maintenance/service. 3. During installation, anchors must be properly torqued to obtain the necessary anchoring strength. DO NOT USE IMPACT DRIVERS. 4. Do not drive or walk onto truck/trailer until the truck/trailer is parked against the dock bumpers and the wheels are chocked or the vehicle restraint has been fully engaged and the lights have changed to GREEN inside and RED outside. 5. Never attempt to lift the lip or hold the lip out by hand. Serious personal injury could occur. 6. Do not remove lifting equipment until: the main cylinder has been filled and the maintenance stand has been installed and engaged. 7. Always check the rigging to make sure that it is secure before attempting to lift the unit. Never stand under any unit being lifted. 8. Never remove the wheel chocks until loading/ unloading is finished and the truck driver has been given permission to drive away from the dock. 	<ol style="list-style-type: none"> 1. Do not ground welding equipment to any hydraulic cylinder or electrical components. 2. Do not attach welder as ground to leveler platform when welding on base frame assembly. Attach welder ground to base frame assembly only. Damage to bearings or hydraulic equipment will occur. 3. Do not allow the drill to go too deeply into the box when drilling holes in the control box. Damage to the control systems may occur. 4. Never use air to blow debris from control box. Use a vacuum to remove debris from control box. 5. Do not connect green ground lead into control box or junction box until all welding has been completed. 6. Check hydraulic fluid level. Deck mounted power unit has been filled with fluid but cylinders, hoses and manifold are shipped dry. 7. Check motor rotation. Jog the motor until rotation has been determined. Do not allow the motor to run in reverse for more than a couple of seconds, because this will damage the power unit. 8. Do not force valve adjustment screws against internal stops. Damage will occur to the valve/seat. 9. If a procedure is not clearly defined in this manual, contact your authorized service representative.

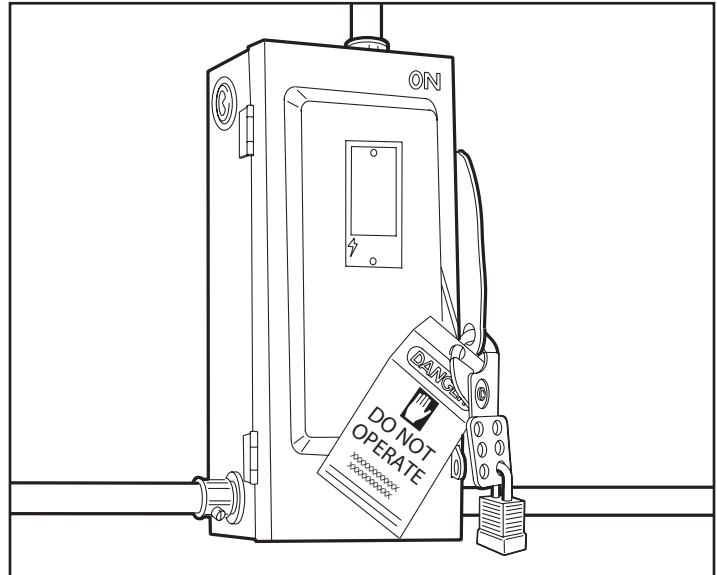
4.0 LOCKOUT / TAGOUT PROCEDURE AND RULES

In accordance with the rules and regulations of the Occupational Safety and Health Administration (OSHA), all affected employees must be notified that the machine or equipment will be shut down and locked out to perform repair or maintenance work. The work area must be checked to ensure that all personnel have been removed or safely repositioned. The machine or equipment power supply shall be locked in the OFF position or disconnected from the energy source. Blue Giant strongly recommends that only OSHA-approved lockout devices and procedures be utilized.

The energy isolating device must bear a prominent warning tag indicating that work is being done on the equipment and the name of the authorized employee responsible for the lockout. It is mandatory that tagout notices not be susceptible to deterioration or illegibility due to weather conditions or exposure to chemicals and moisture.

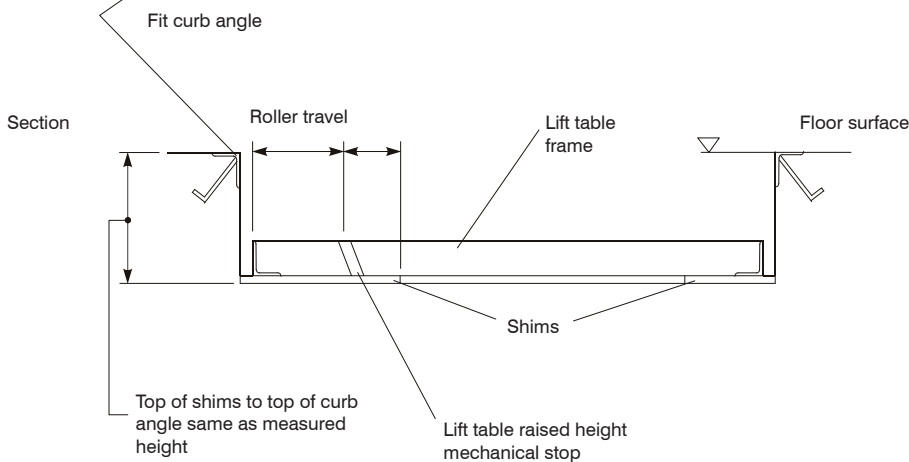
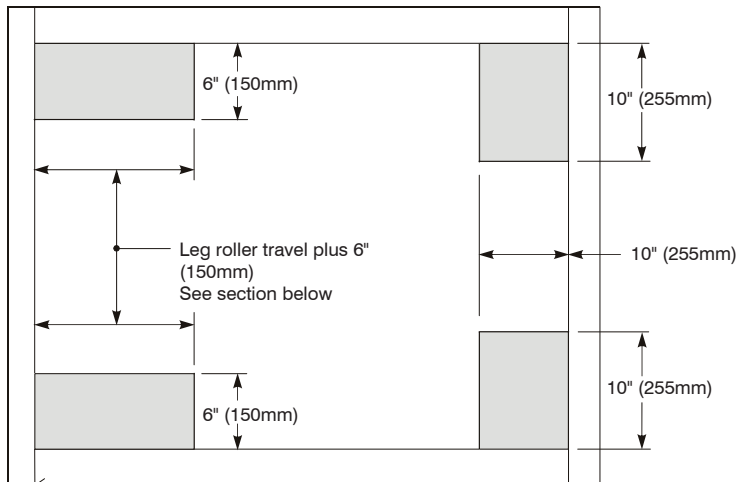
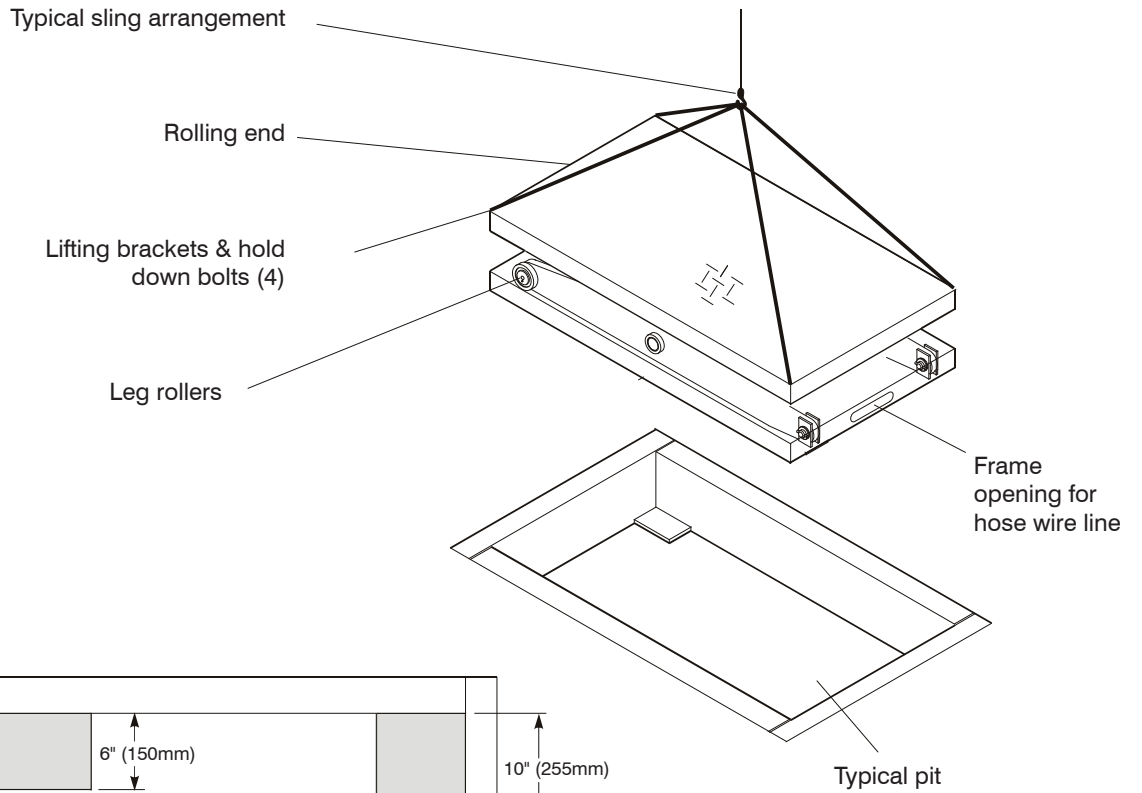
 **WARNING**

Always lockout and tagout any power source before performing any work on any electrical devices or electrical controls according to OSHA regulations and approved local electrical codes.



Approved way to lockout / tagout.


5.0 HANDLING AND INSTALLATION INSTRUCTIONS



5.1 INSTALLATION INSTRUCTIONS

1. Clean the pit / pad and verify that all dimensions and conduit locations are in accordance with Overhead Door pit / pad drawings.
 2. Measure the height of the lift at each corner (pit-style only).
 3. Place shims on floor of pit as described in page 4 . Thickness of shims to provide a pit depth to suit corner heights measured and allow deck, when fully lowered, to be flush with the floor surface.
 4. Locate the power pack end of the buried conduit and place power pack nearby.
 5. Unpack the power pack and prepare hydraulic hose, vent line, and electrical wire for pulling through their respective buried conduit.

NOTE: Do not tie hydraulic hose and vent line together except at pulling end.


NOTE: Electrical wire(s) must not be located in the same conduit as hydraulic hose(s).
 6. Pull hose, line, and wire through their respective conduit and into pit / pad area.
 7. Prepare slings and hoisting equipment as required. See page 4.
 8. Position the lift adjacent to the pit / pad oriented to allow attaching hydraulic hose, electrical wire, and vent line. *Do not stand the lift on its side, as damage will result.*
 9. Securely connect the hydraulic hose from the conduit to the hydraulic hose in the table through the frame opening.
 10. Connect the vent lines at the frame opening.
-  **DANGER**


Do not work under lift without maintenance device in place.
11. Connect electrical wires, color to color, into table junction box through frame opening if working space permits. If not, pull adequate wire through the conduit to allow later connection. Tie off securely to hydraulic hose inside frame.
 12. Carefully sling the lift into position, pulling hose vent line and wire through conduit as unit is lowered into the pit. Protect wire, hose, and vent line from sharp edges and roughness with plastic tube or other sheathing if required.
 13. Assure hose, vent line, and wire are not damaged to pinched as the unit is moved.
 14. Center and square unit in pit on shims (pit-style only).
 15. Remove and discard lifting brackets and hold down bolts.
 16. Measure and record amount of shim adjustment required to position top of deck flush with floor surface, all four corners (pit-style only).
 17. Locate and mount power pack in its permanent location.
 18. Remove temporary plugs from breather and vent line fittings, located side by side on top surface of reservoir. Breather fitting is 12" (12mm) NPT and vent line fitting is 1/4" (6mm) NPT.
 19. Locate and remove plastic cap-plug from hydraulic hose connector fitting on the power pack.
 20. Position and permanently attach hydraulic hose, reservoir breather, and vent line to power pack.
 21. Install clips and ties as required to retain the hose, line, and wire in suitable positions.
 22. If electrical wire connections were not made at lift end as described in step 11, trace and locate these wires in the power pack control box and remove them from the terminal block connections. Mark each wire as removed to simplify later attachment
 23. If wires removed in step 22 are intended for safety trip bars, install a temporary jumper between terminal block connections ST to DN. If wires removed in step 22 are intended for up limit switch, install a temporary jumper wire between terminal block connections UP to LS.

NOTE: Some units have no electrical wires between pit and power pack.
 24. Have a *qualified electrician* supply an electrical hook-up to the power control box and check for correct motor rotation as explained in detail on page 6.
 25. Turn power supply "ON" and operate "UP" push button to raise deck.
 26. Position maintenance device to prevent deck from lowering unexpectedly. Lower unloaded lift deck fully onto maintenance device or suitable blocking if maintenance device is inoperable.

NOTE: Maintenance device is to be used with an unloaded deck only.

5.1 INSTALLATION INSTRUCTIONS CONT'D.

 WARNING
<p>Do not work beneath a raised deck lift without:</p> <ul style="list-style-type: none"> • Engaging maintenance device • Power supply to control box is turned "OFF" and locked out as required to assure that electrical power cannot be turned "ON" unexpectedly. <p>Failure to follow these warning could result in serious injury or death.</p>

 WARNING
<p>Do not run motor in wrong direction, hydraulic pump may be damaged.</p>

NOTE: If extensive work is to be done under lift table, additional support or blocking may be necessary. Contact your Blue Giant representative if unsure or more information is required. 27. Turn electrical supply to control box "OFF".

28. Make permanent electrical and hydraulic connections under lift as required.
29. Remove temporary jumper wires from the control box terminal strips (if applicable) and reconnect electrical wires to their original terminals.
30. Place appropriate hold-down anchor brackets (4 pieces) against lower frame in appropriate locations.

NOTE: Anchor brackets are not required if frame is predrilled. Drill concrete as required and install anchor bolts to securely attach brackets to floor of pit.
31. Turn power supply "ON" and remove maintenance device and / or blocking. Operate lift up and down several times. Check that the deck is centered and square in pit when fully lowered, top of deck is flush with surface of floor.
32. Raise deck, place maintenance device into position, lower deck fully onto maintenance device and lock power supply "OFF".
33. Adjust shims if required and securely weld all shims and hold-down brackets permanently to frame.
34. Turn power supply "ON", remove maintenance device, and lower lift fully.
35. Install lip, guard rails, indicator bars, trip bars, push button control, etc., as required (when applicable). It is recommended that guard rails be welded in place after installation.
36. Mount "Safety Instructions" placard.
37. To complete installation, clean up entire work area and apply touch-up paint to all scratches and burns.

Power pack motor rotation must be clockwise (when viewed from end opposite pump).

Single phase power supply:

All are factory-wired for correct rotation at time of installation. To change rotation, see instructions located inside the cover of the electrical junction box on the motor.

Three phase power supply:

All must be field-wired correctly at the time of installation and electrical power supply hook-up. To change rotation, interchange any two motor leads.

When the power pack's location prevents viewing motor to determine direction of rotation, proceed as follows:

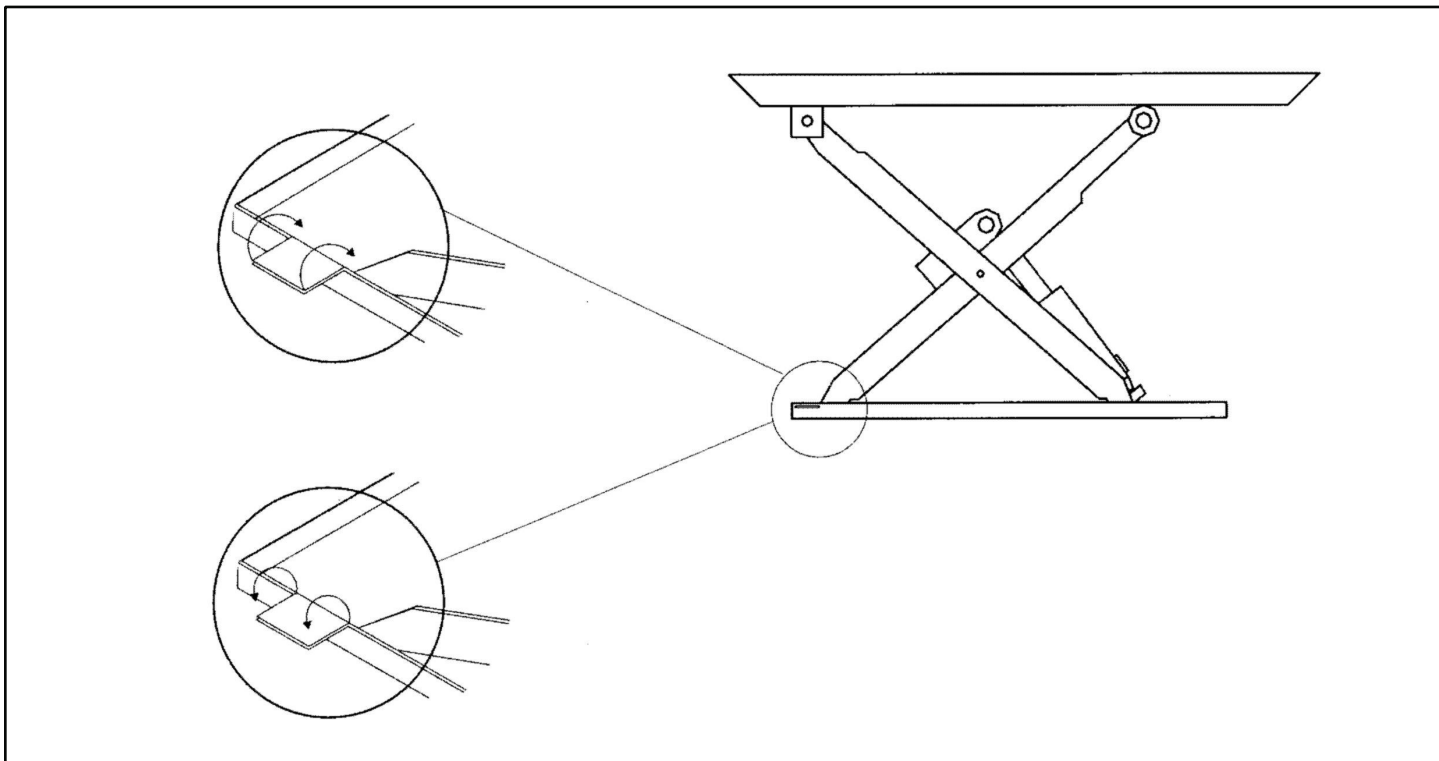
1. Complete mechanical installation and electrical hook-up as required.
2. Turn power supply "ON".
3. Observe unit and run power pack motor, for no more than 5 seconds, by operating "UP" push button.
4. If unit begins to raise, rotation is correct.
5. If there is no indication of movement, allow pump to cool for 1 minute **minimum** before running again.
6. Repeat the 5 seconds "ON" and 1 minute "OFF" cycle **no more than 3 times**. If no movement of unit is evident, change rotation of motor and repeat above steps.
7. If there is no movement of unit after completion of above, consult your authorized OHD service representative.

Maintenance Device Decal:

Place on base frame adjacent to each maintenance device intended to warn service personnel to engage maintenance device before working on, and particularly under, lift platform.

NOTE: Ensure that maintenance device is secure before going under lift platform.

6.0 MAINTENANCE DEVICE DETAIL



SAFETY INFORMATION

6.1 OWNER'S RESPONSIBILITIES:

1. Inspection and Maintenance

Lift shall be inspected and maintained in proper working order in accordance with manufacturer's operating/maintenance manual and safe operating practice.

2. Removal from Service

Any lift not in safe operating condition shall be removed from service until it is repaired to original manufacturer's standards.

3. Repairs

All repairs shall be made by authorized personnel in conformance with manufacturer's instructions.

4. Modifications and Alterations

Modifications or alterations of industrial scissor lifts shall be made only with written permission of original manufacturer.

These changes shall also satisfy all safety recommendations of original equipment manufacturer for particular application of lift.

6.2 OPERATOR'S RESPONSIBILITIES:

Only trained and authorized personnel shall be permitted to operate lift.

1. Read and understand safety/operation information contained herein, or be trained by a qualified person.
2. It is responsibility of operator to be certain that no unsafe conditions exist before using this equipment. Before operating this equipment, inspect it for proper operation and condition. If any unsafe conditions exists, remove lift from service until repairs are made.
3. Lift shall be used in accordance with its intended use and within manufacturer's limitations and safety rules
4. Do not exceed rated capacity as indicated on name plates.
5. Ensure that all safety devices are operation and in place.

7.0 WARNING PLACARD



WARNING

APPLIES TO BLUE GIANT SCISSOR LIFTS

Do not operate this scissor lift without proper training and authorization.

READ AND UNDERSTAND THE FOLLOWING:

*The instructions and warnings on this placard and in the owner's manual.
The warnings on the scissor lift decals.*

Do NOT go under the scissor lift platform to clean or perform routine maintenance unless the maintenance device is safely and securely engaged.

Prior to using the scissor lift:

- *Verify that all safety devices (guard rails, restraint chains, toe guards, and warning bells if so equipped), are in place and functioning properly.*

- *Operate the scissor lift through one complete lift / lower cycle and verify its proper operation. Inspect the scissor lift for signs of structural damage or mechanical malfunction. If damage is observed or the unit fails to operate properly, remove them from service and notify maintenance personnel immediately.*

Do NOT exceed the capacity as stated on the nameplate.

Ensure that the scissor lift serial nameplate is present and legible.

Do NOT leave the control station where it can be accidentally operated or damaged.

Be aware that lift capacity may be reduced when loads are rolled over the platform sides or edges. Refer to the nameplate for reduced capacity under these conditions.

If loads are mobile, secure them in a fixed position before operating the scissor lift.

Ensure that all personnel near the scissor lift are aware that it is being operated.

Keep objects, control cables and debris away from the scissor lift platform and its travel path.

Ensure that the area around the scissor lift is free of objects and spills that could become trip hazards.

If the scissor lift is equipped with a hinged bridge(s), the bridge must overlap the trailer bed by a minimum of 4" (102mm) before use. Do not use the bridge if it is supported solely by the lifting chain.

If maintenance or service is required:

- *Only authorized service personnel shall provide maintenance / service on the lift.*

- *Follow approved lockout procedures.*

- *Do NOT work on or under the lift without properly engaging the lift's maintenance device. Blue Giant recommends the use of a secondary means of securing the scissor lift while performing repairs under the deck.*

- *The lift shall not be modified or altered without written approval from an authorized Blue Giant representative.*

- *Maintain records of repairs and preventive maintenance reports.*

8.0 OPERATING INSTRUCTIONS

1. Read and understand these instructions and safety rules before operating lift.
2. Before using lift, inspect it for proper operation and condition. If any unsafe condition exists, remove unit from service until repairs are made.
3. Before using unit, inspect all safety devices, such as guard rails, snap chains, and toe guards to be certain that they are in place and functioning properly.
4. Lift is controlled from a push button station. Station is equipped with arrows that indicate direction of movement. Pressing and holding “UP” button will cause unit to rise, pressing and holding “DOWN” button will cause unit to lower. Releasing either button will stop movement of lift.

 **WARNING**


Do not exceed capacity of lift.

5. Prior to placing a load on lift, read and understand unit capacity as labeled on serial number plate. Plate can be found riveted to side of deck assembly. Understand that capacity of lift is expressed as **maximum uniformly distributed load** unit is rated to carry. Unit capacity is down rated for rolling loads or loads concentrated on end(s) or side(s). These down rated capacities can also be found on serial number plate.

 **WARNING**

To avoid bodily injury, stand clear while lift is moving.


6. Loading / unloading unit:
 - (a) If loading / unloading a truck or other mobile vehicle, ensure brakes are set and wheels chocked before proceeding.
 - (b) Center load on lift platform.
 - (c) If load is mobile (i.e. carts, pallet truck, forklift) set brakes and/or lower load onto platform surface to minimize potential load shift.
 - (d) Ensure snap chain(s) are securely in position. If unit is equipped with a hinge bridge, it must be stored in upright position and secured by safety chain(s).
 - (e) Using push button station, raise unit so that platform is level or slightly above truck bed.

 **DANGER**

Ensure that people and objects are clear of areas beneath platform and immediately surrounding perimeter of lift while unit is in motion.

- (f) Lower hinged bridge (if equipped) onto truck bed. Ensure that truck bed and bridge overlap by a minimum of 4" (100mm). If overlap is less than 4" (100mm), reposition truck to achieve this minimum overlap. (If overlap still cannot be achieved, contact your Blue Giant representative as a longer bridge may be required). Secure bridge in place with safety chain(s).

NOTE: Bridge safety chain must remain slack to ensure positive contact with vehicle loaded at all times.

 **WARNING**

Do not stand on or apply weight to hinged bridge unless it is supported by a minimum of 4" (100mm) of overlap. Never attempt to stand or apply weight to hinged bridge if supported solely by snap chains.

- (g) Proceed to transfer load.
- (h) To lower lift, repeat sequence (b) through (e) using “UP” button instead of “DOWN” button in step (e)



Typical push button control station.

9.0 PLANNED MAINTENANCE



WARNING

Do not work beneath a raised dock lift without:

- Engaging maintenance device
- Power supply to control box is turned “OFF” and locked out as required to assure that electrical power cannot be turned “ON” unexpectedly

Failure to follow these warnings could result in serious injury or death.

Spotting trouble before it happens can prevent costly downtime and extensive repairs and make it possible for service and repairs to be performed when unit is not required for regular operation.

Once a month inspect and lubricate mechanical, hydraulic and electrical components as outlined below. More frequent inspections are necessary for adverse conditions such as temperature extremes, dirty environment, etc.

Electrical System:

Periodically check for wire and cable damage. Keep water and ice away from power pack.

Mechanical System:

1. Make a safety inspection of complete unit. Check for visible damage or misalignment. Check for excessive wear of all moving parts. Inspect upper limit mechanical stops for damage. Repair if necessary.
2. Lubrication: All bearings and bushings are sealed or self-lubricating. However, points shown on page 15, should be oiled once a month with SAE 30 motor oil.
3. Upper limit switches and safety trip bar switches, if so equipped, must be operating.

Hydraulic System:

1. Hydraulic fluid level should be kept to 2" (50mm) above tank suction fitting with deck in fully raised position.
2. Use only approved quality hydraulic fluid. For normal room temperature following oil is recommended: ISO 32 grade oil.
3. Change hydraulic fluid three months after equipment is placed in service and check every twelve months thereafter (more frequently for adverse conditions such as moisture, lower temperature or dusty atmosphere).

9.1 TROUBLESHOOTING GUIDE

Following description of operating principles is intended as a guide when trouble shooting and making adjustments or repairs. If no fault can be found and equipment fails to operate properly, contact Blue Giant or an authorized dealer.

Pushing “UP” button energizes pump which supplies fluid under pressure to cylinder for lifting deck. A check valve (inside pump or in line) prevents any back flow of oil through pump when it is shut off.

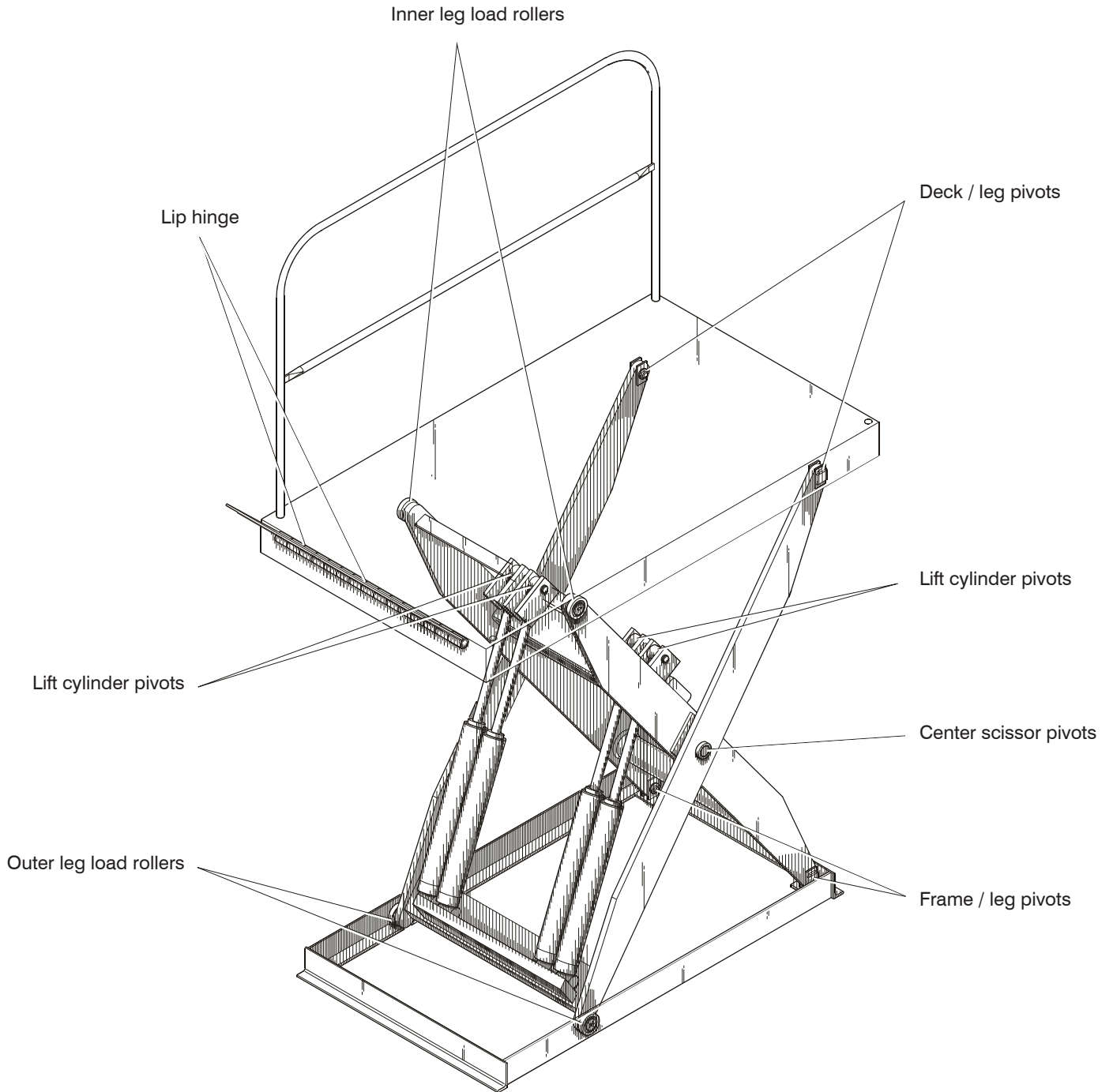
Pushing “DOWN” button opens solenoid lowering valve which allows fluid from cylinder to return to reservoir. Lowering speed is controlled by load lowering valve. Lowering is factory set for safe lowering and normally requires no further adjustment.

If a limit switch is used to control upward travel it is electrically connected in series with “UP” push button switch.

Upward travel of the deck is limited by stops on the leg roller tracks of the lower frame (in some cases internal stops within cylinders are used to limit travel). These stops should never be used to position deck at intended raised height.

Safety trip bars (optional) actuate limit switches which cut off power to solenoid lowering valve. Lowering valve closes and table stops descending. Adjustment is achieved by moving limit switch actuating arm. There should be between 1/4" (6mm) and 1" (25mm) vertical movement of trip bar to actuate any of trip bar switches.

9.3 STATIONARY ELEVATING DOCK - LUBRICATION POINTS



BLUE GIANT[®]
BLUE GIANT EQUIPMENT CORPORATION

Corporate 85 Heart Lake Road South
Brampton, ON, Canada L6W 3K2
t 905.457.3900 f 905.457.2313

USA 6350 Burnt Poplar Road
Greensboro, NC 27409
www.BlueGiant.com