

OPERATOR'S MANUAL/PARTS LIST

BG-770D/BG-770DB MOBILE LIFT TABLE



ACTUAL PRODUCT MAY NOT APPEAR EXACTLY AS SHOWN

WARNING

Do not operate or service this product unless you have read and fully understand the entire contents of this manual. Failure to do so may result in bodily injury or death.

BLUE GIANT[®]

STARTING FROM MARCH 19, 2024 / SERIAL # 0.

ISSUE DATE: MARCH 19, 2024 REV. 1.1 (PART # 038-1217EO)

TABLE OF CONTENTS

1. SAFETY PROCEDURES	3
2. OWNER'S PURCHASE RECORD	3
3. EXCLUSION OF LIABILITY	3
4. WARRANTY	4
5. CHECK SHIPMENT BEFORE ASSEMBLY AND/OR USE	4
1. RANGE OF USE	4
2. OPERATION CONDITIONS	5
3. BG-770D SPECIFICATIONS	5
4. BG-770DB SPECIFICATIONS	6
5. POINTS FOR ATTENTION	7
6. USAGE AND PERFORMANCE:	7
7. OPERATING INSTRUCTIONS	8
8. MAINTENANCE AND SERVICING	10
9. TROUBLESHOOTING:	11
10. BG-770D HARDWARE	14
11. BG-770DB HARDWARE	23

DEALER INFORMATION

Name:

Contact:

Telephone:

1. SAFETY PROCEDURES

1. Do not operate this lift table unless you have been trained and authorized to do so.
2. Do not operate this lift table until you have read and understood all of the safety information and instructions contained herein and on the lift table.
3. Do not operate this lift table until you have checked its condition. Give special attention to wheels, controls and lifting systems, including steering mechanism, and safety devices.
4. Report the need for lift table repairs to your supervisor immediately and do not operate lift table until repairs are made. Neglect may cause a minor repair to become a major service problem and cause the lift table to become unsafe.
5. Do not load lift table beyond capacity shown on serial name plate on lift table.
6. This equipment is designed for evenly centered loads with forks completely supporting the load. Off-centering of loads can result in a dangerous operating condition and may cause damage or injury.
7. Always look in direction of travel. Use caution when visibility is obstructed by load.
8. Extreme caution must be used when handling loosely stacked/package loads.
9. Watch swing clearance when turning near walls, racks, pillars or other obstacles.
10. Start, stop, change direction and travel smoothly. Slow down for turns and on uneven or slippery surfaces that cause lift table to slide or tip. Be aware that the lift table behaves differently without a load than with a load.
11. Observe applicable traffic regulations. Yield right of way to pedestrians.
12. Do not ride on this equipment.
13. Do not carry passengers or lift personnel.
14. Before you leave the lift table, fully lower lifting mechanism.

2. OWNER'S PURCHASE RECORD

OWNER'S PURCHASE RECORD	
Please record information for future inquiries and to validate warranty.	
Dealer:	Date in Service:
	Number of Units:
Owner's Name:	Order Number:
Serial Number:	Year of Construction:

3. EXCLUSION OF LIABILITY

The manufacturer assumes no liability for damage or injury to persons or property which has occurred as a result of defects or faults in the lift tables delivered or due to incorrect use. The manufacturer also assumes no liability for lost profits, operating down times, or similar indirect losses which the buyer has incurred. Damage to third parties, irrespective of its nature, is not subject to compensation.

The operating instructions are not subject to notification of amendment. The descriptions and illustrations included in our operating instructions and replacement parts list are not binding.

In the interests of further development, we reserve the right to make any changes at any time to the modules, components and accessories

which we deem to be expedient, or for technical reasons, while retaining the essential features of the models described here.

4. WARRANTY

To validate warranty on recently purchased equipment, please complete and submit your information with our online Warranty Registration at www.bluegiant.com.

For more information about Blue Giant Warranty Support, please contact your local Blue Giant Equipment dealer, representative or authorized partner near you. You may also visit www.bluegiant.com or phone 1.905.457.3900.

NOTE: All products must be registered to qualify for warranty.

5. CHECK SHIPMENT BEFORE ASSEMBLY AND/OR USE

The lift table is to be carefully checked at the manufacturer's plant before shipment.

In order to ensure that no damage has occurred during transport, the lift table should be checked upon receipt for transport damage and to ensure correct operation. Damage due to transport is to be listed on the signed copy on the freight document. The freight forwarder must be notified of any damage within 48 hours. Damaged lift tables must not be put into use.

LOADING SPECIFICATION

The lift table is designed for the horizontal transportation of loads on a level, fixed base. The load must be evenly distributed on pallets or similar receptacles. The ideal loading mode is that the gravity center of heavy goods is at the central position of the fork. The maximum load-carrying capacity is shown on the appropriate designation plate and on the load sticker on the lift table. When there exists defective load, the rated carrying capacity shall be reduced. If the load on the table is one sided, there is a risk of the table bending or the load slipping off. In order to preserve the wheels and chassis the lift table must not be driven over very uneven ground.

MAXIMUM INCLINES OR DECLINE GRADES

The lift table is equipped with a permanently set pressure-limiting valve which permits a maximum load of 5 % of the nominal load. The screw plug on the pressure control valve is secured so as to avoid inappropriate manipulation from the operating personnel. In order to avoid damage to the goods being transported and the means of transport, the load must be supported evenly. If the load is unevenly distributed the pressure limiting valve will not function. When driving on down-grades the load is to be secured to prevent it from slipping or sliding off the lift table, (e.g. additional operating personnel). In addition to this, only lift tables with a parking brake are to be used on down-grades up to approx 6 %. Journeys on inclines or down-grades of more than 6 % are always to be avoided. Safe transport cannot be guaranteed when the center of gravity of the load has altered.

SAFETY WITH TALL LOADS

Transporting with tall loads changes the center of gravity of the load so unfavorably that the complete lift table including the load, goes out of control and may overturn on a curve. Loading, (e.g. onto a lift table or mobile loading ramps) should be regarded in particular as likely occasions for accidents. During such activities the lift table is to be secured with particular care. Conveying persons or using the lift table as a form of roller skate is not permissible. Foodstuffs are only to be transported in packed form. Direct contact with the lift table is to be avoided. The accident prevention regulations for industrial lift tables and the safety regulations and accident prevention regulations applicable to the user are also to be complied with.

1. RANGE OF USE

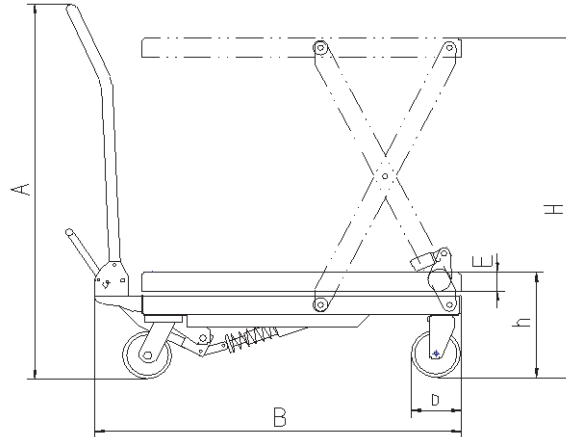
BG mobile series lift table is a high lifting tool which is suitable for short distance transportation and lifting cargoes. Besides, it can also be used as station facilities in workshops. The lift table depends on hydraulic pump for lifting power, which decreases labor intensity and

improves working efficiency.

2. OPERATION CONDITIONS

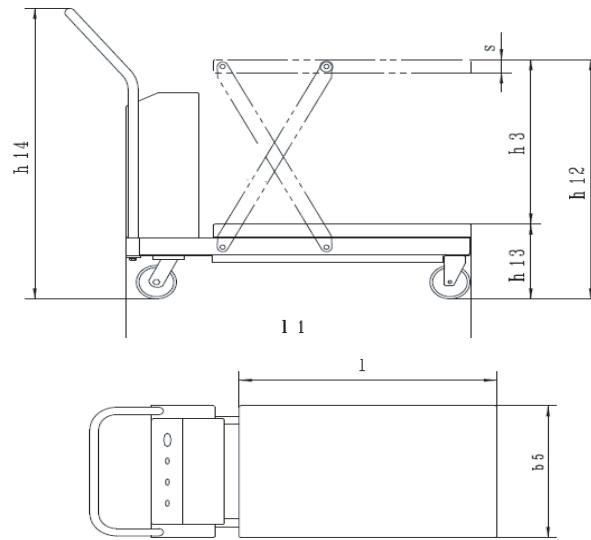
- a. It should be operated on the solid and flat ground.
- b. The ambient temperature for operation should be -20~40°C.

3. BG-770D SPECIFICATIONS



Specification / Model	BG-770D
Capacity kg	350Kg (770 lbs)
Max. lift height H mm	1300
Min. height of table h mm	350
Table size L×C×E mm	910×500×50
Handle height A mm	970
Overall length B mm	980
Foot pedal cycles to max. height	≤60
Wheel diameter D mm	Ø127
Working volume of oil cylinder ml	164
Oil capacity ml	250
Service weight kg	105

4. BG-770DB SPECIFICATIONS



Model	BG-770DB
Maximum load capacity	350Kg (770 lbs)
Dimension (mm)	1367×500×1101
Lifting height (h3) (mm)	915
Minimum height (h13) (mm)	405
Maximum height (h12) (mm)	1320
Handle height (h14) (mm)	1101
Platform size (l×b×s) (mm)	910×500×56
Overall length without handle (mm)	1177
Starting pressure under rated load (Mpa)	18
Working pressure under rated load (Mpa)	14
Lifting speed under rated load (mm/s)	70/s (≈13s)
Lowering speed under rated load (mm/s)	70/s (≈13s)
Working voltage of hydraulic pump motor (V)	24
Power of hydraulic pump motor (W)	800
Oil tank capacity of hydraulic pump (ml)	500
Power supply	Lead-acid battery (valve-controlled type)
Battery capacity (Ah)	33Ah×2(parallel)
Battery voltage (v)	12×2=24v
Switch control mode	Button Inching
AC input of charger	220V/110V/50Hz
Input power of charger	0.5kVA
Wheel diameter (mm)	Ø127
Weight (kg)	150

5. POINTS FOR ATTENTION

1. Don't overload the lift table and it should be used within the rated load.
2. Do not stand or sit on the platform when working.
3. Do not put your hands or legs under the platform.
4. When the goods are loaded onto the lift table, the engage lift table brake to prevent the lift table from moving.
5. When the goods are loaded onto the lift table, they should not be deflected and distributed evenly on the whole platform.
6. Don't operate the lift table when the loaded goods are lifted.
7. The lift table can be operated on flat and solid ground, and it is forbidden to operate the lift table on the slope.
8. The weight of cargoes must be kept strictly within the rated load when loaded onto the lifted platform, and the cargoes should be loaded onto the platform gently. (The overflow valve only functions during the lifting process. If the overweight cargo is put on the lifted platform, the overflow valve can not work properly. In this way, the hydraulic station will be damaged and can't work normally.)
9. The hydraulic pump can't be started during charging, otherwise the charger and hydraulic pump will be damaged.
10. The overflow valve has been adjusted to the rated load when ex-factory. Please do not adjust it, except by trained personnel.

NOTE: Failure to follow these "points for attention" items will pose risk to the human body and lift table.

6. USAGE AND PERFORMANCE:

1. The new (electric) lift table should be charged for more than 12 hours before the initial use.
2. The load lifting and lowering is driven by the hydraulic pump, and the traveling of lift table is manually controlled.
3. The lift table table will be lifted
 - when the lifting button is pressed,
 - when the food pedal is pumped.
4. The table will be lowered
 - when the lowering button is pressed or
 - when the knob release is pulled.
5. Please make the brake open before moving the lift table.

7. OPERATING INSTRUCTIONS

⚠ CAUTION

- Fully read and understand the mobile lift table operation.
- Only trained personnel should operate or service this equipment.
- Always park the mobile lift table after use.
- Conduct routine inspections and maintenance. Failure to do so could cause equipment damage and or personal injury.
- Never operate a broken or damaged dock leveler. Repair immediately by a qualified service technician.
- Always contact your Blue Giant Dealer immediately if a malfunction occurs.
- Do not enter the area under the table.
- Loose or unbalanced loads are dangerous.
- While transferring loads, be aware of potential fall risks from table.
- Practice safe load transfer methods. If you do NOT understand the complete table operating procedure and safe load transfer methods, refer to the Owner/Operator regarding local regulatory/jurisdictional and facility requirements.

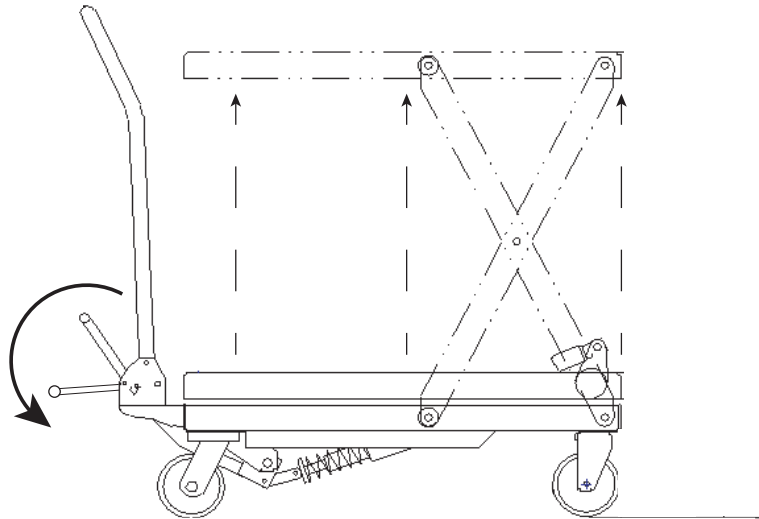
NOTICE

- Always keep the work area clean and free of litter.
- Always clean all side openings of dirt and debris.
- Always clean up dry and liquid spills immediately after they occur.
- If a procedure is not clearly defined in this manual, contact your Blue Giant Dealer.

Manual Hydraulic

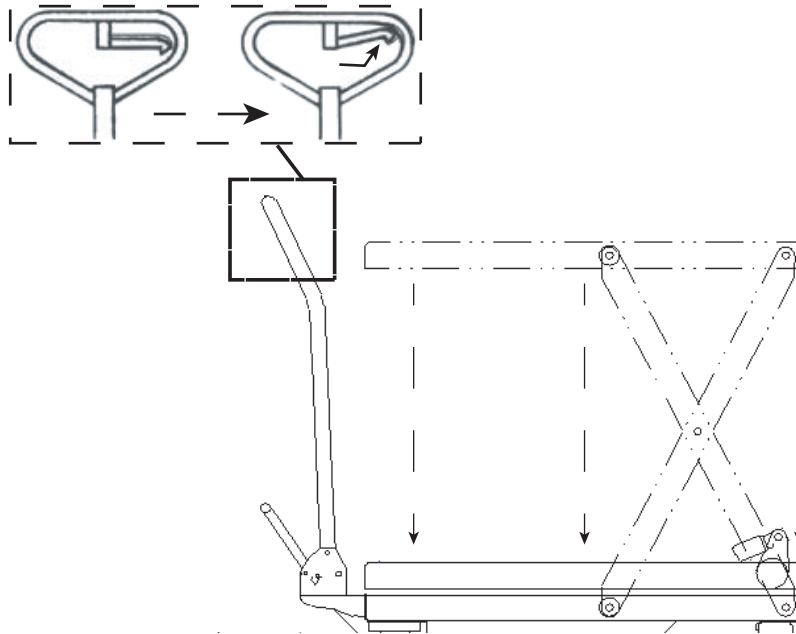
Raising the table

1. Verify that the brake is engaged.
2. Step on the foot lever for several times to raise the working table.



Lowering the table

1. Lift the handle knob upward slowly, and open the one-way valve to make the working table descend slowly.

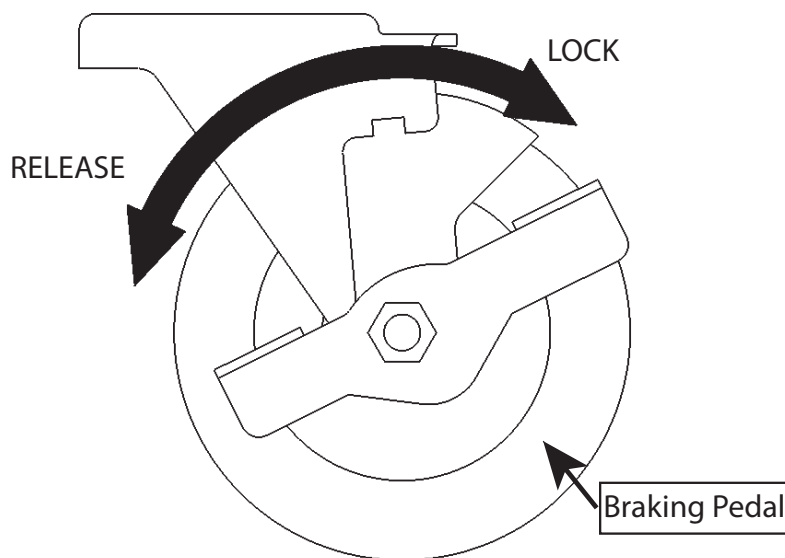


2. Release the brake before moving the lift table.

Brake operation

Do not raise nor lower table without brake in operation. Do **NOT** put any part of the foot and body on the brake.

1. Press lock tab on the Brake Pedal to engage braking.
2. Press the opposite tab on the Brake Pedal to disengage braking.



Electric Hydraulic

Raising the table

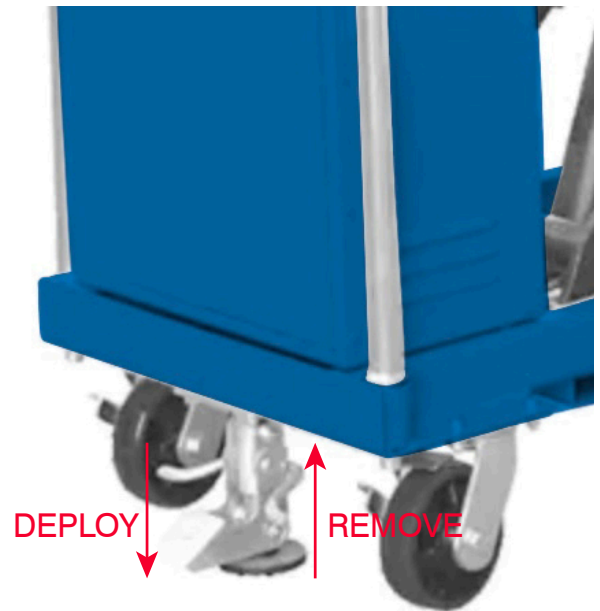
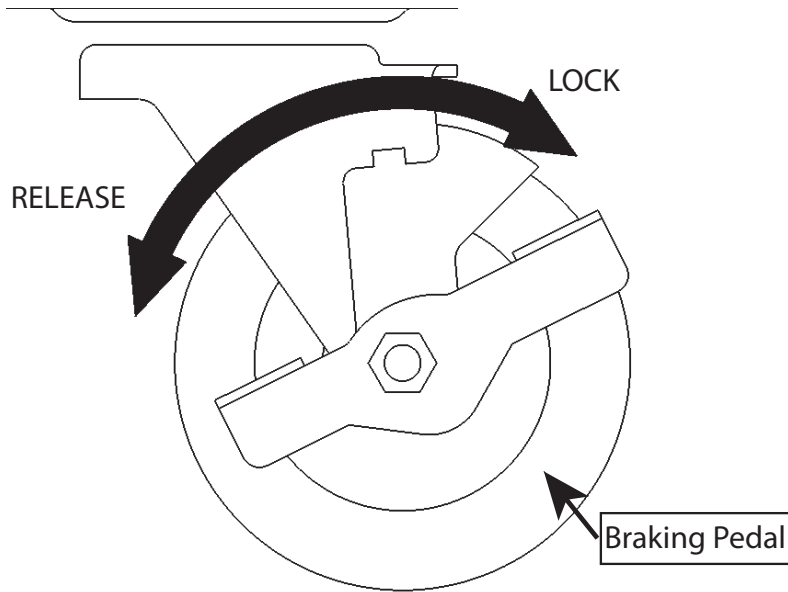
1. Verify that brake is engaged.
2. Press and hold the **Raise Button** to raise the working table.

Lowering the table

2. Press and hold the **Lower Button** to make the working table descend slowly.
3. Release the brake before moving the lift table.

Brake operation

Do not raise nor lower table without wheel brake or floor suction brake in operation. Do **NOT** put any part of the foot and body on the brake.



MAINTENANCE AND SERVICING

⚠ DANGER

- Failure to properly secure the mobile lift table prior to working underneath it may result in bodily injury or death.
- Engage the Maintenance Strut before working. If it cannot be successfully engaged, contact your Blue Giant Dealer.

⚠ WARNING

- Post safety warnings and barricade work area at dock and ground level. Notify all affected personnel that work is being performed on the unit and follow proper lock-out procedure.
- If applicable, verify that power to the unit has been completely cut off and cannot be turned back on accidentally, as per OSHA requirement.
- Head protection and other applicable PPE is recommended when working under or around the raised table.
- Maintenance Strut must be used when working under the lift. (i.e. more than cleaning or visually inspecting)
- Install Maintenance Strut only when the unit is sufficiently raised.
- Do not stand in the pathway of the mobile lift table during the disengagement process in case the dock falls unexpectedly.

⚠ CAUTION

- It is recommended that a retrieval tool be used when retrieving or replacing the Maintenance Strut from its stored position.
- It is recommended that this procedure be performed with assistance.

It is very important to carry out necessary maintenance and servicing in order to prolong service life of the lift table and ensure the safe use of it. Check out the following items before use:

1. The new lift table should be charged for more than 12 hours with the equipped charger for the initial use. Before charge, check the

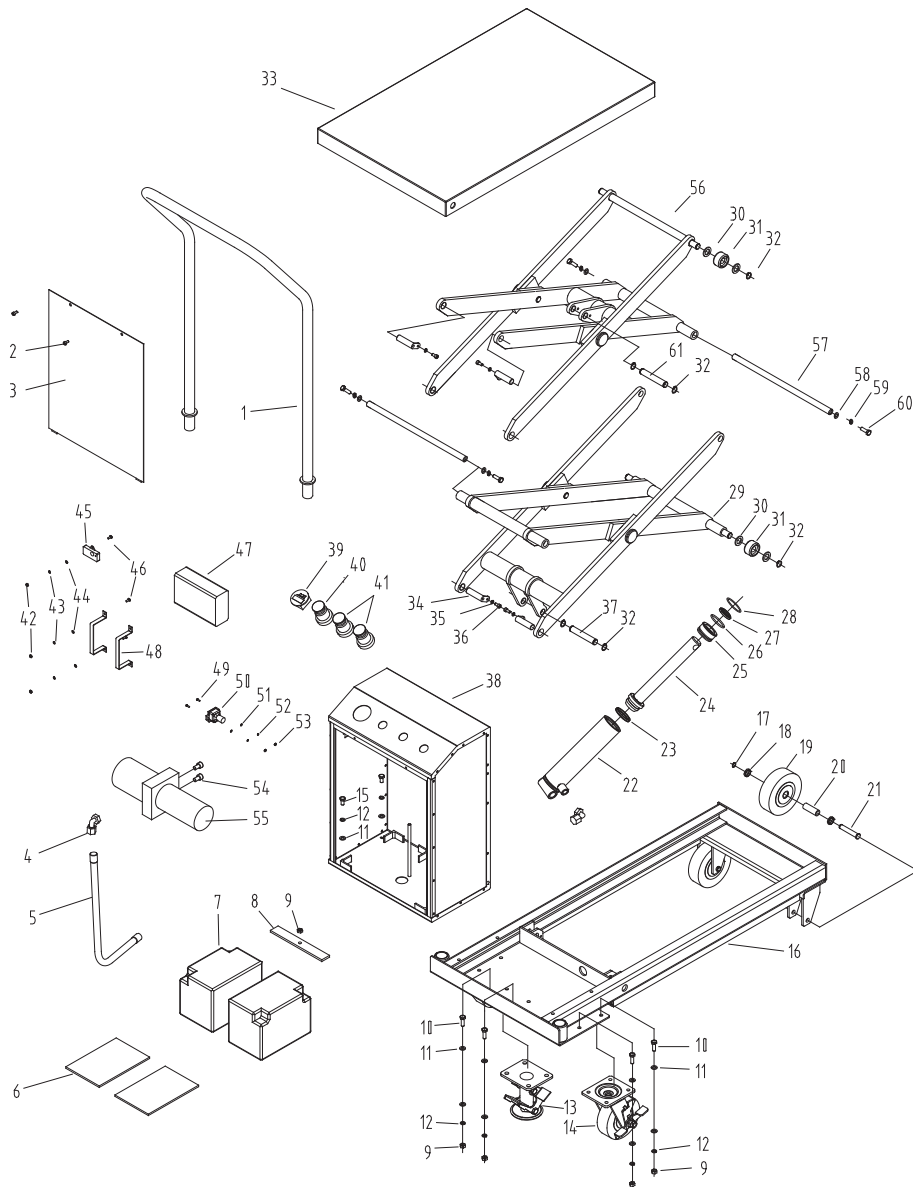
tightness of the electric terminals. If there is any looseness, tighten the electric terminals before charging. The charging voltage is 220V single-phase AC.

2. If there is any deformation and bending on every parts of the lift table.
3. Check the flexibility of the brake as well as the wearing condition of the wheels.
4. If there is any oil leakage of the hydraulic system
5. Check the high-pressure oil tube, and replace it in time if damaged. If the high-pressure oil tube in use is broken, it will cause serious risk.
6. Add lubricant oil to the friction surfaces before daily operation.
7. Charge the table lift table in time after daily operation.
8. If there is malfunction, repair the table lift table in time and then put it into use.
9. Replace hydraulic oil every 12 months. Select the following or similar brand hydraulic oil according to the climate conditions of various areas:
 - a. YBN32 is applicable for the ambient temperature of -10~+40°C.
 - b. YCN32 is applicable for the ambient temperature of -20~+40°C.

8. TROUBLESHOOTING:

Trouble	Cause	Solutions
The platform can't be lifted.	<ol style="list-style-type: none"> 1. It is overloaded. 2. The voltage of storage battery is not enough. 3. Low pressure of overflow valve. 4. Hydraulic pump is damaged. 5. Motor of hydraulic pump is damaged. 6. The lifting pushbutton switch is damaged. 	<ol style="list-style-type: none"> 1. Decrease the load 2. Charge the battery fully. 3. Adjust the pressure of overflow valve. 4. Replace or repair hydraulic pump. 5. Replace or repair motor of hydraulic pump. 6. Replace or repair switch button.
Insufficient lifting height of platform	<ol style="list-style-type: none"> 1. Battery voltage is not enough. 2. Hydraulic oil is not enough. 	<ol style="list-style-type: none"> 1. Recharge the battery. 2. Add enough hydraulic oil.
The platform can be lowered after it is lifted.	<ol style="list-style-type: none"> 1. Electromagnetic valve of the hydraulic pump is out of control. 2. The lowering pushbutton switch is damaged. 	<ol style="list-style-type: none"> 1. Repair or adjust electromagnetic valve 2. Replace or repair pushbutton switch

BG-700DB Final Assembly



BG-700DB Final Assembly

No.	Description	Qty	No.	Description	Qty
1	Handle assembly	1	32	Circlip for axle 16	8
2	Inner hexagon screw M5×10	2	33	Table	1
3	Door	1	34	Inner hexagon screw M6×12	4
4	Diverter tiein	2	35	Spring washer 6	4
5	H.P. oil pipe	1	36	L-pin roll	4
6	Cushion	2	37	Pin roll	1
7	Lead-acid battery	2	38	Case assembly	1
8	Pressure plate	1	39	Electric energy meter	1
9	Nut M8	13	40	Switch	1
10	Hexagon bolt M8×25	12	41	Lift/drop button	2
11	Flat washer 8	28	42	Nut M4	5
12	Spring washer 8	16	43	Spring washer 4	5
13	Brake assembly	1	44	Small flat washer 4	10
14	Caster assembly	2	45	Low voltage protector	1
15	Hexagon bolt M8×16	4	46	slotted pan head screw M4×11	5
16	Frame assembly	1	47	Charger	1
17	Circlip for axle 12	2	48	Clip	2
18	Bushing	4	49	Slotted countersunk screw M3×10	2
19	Wheel	2	50	Charger plugin socket	2
20	Core pipe	2	51	Small flat washer 3	2
21	Pin roll	2	52	Spring washer 3	2
22	Cylinder body	1	53	Nut M3	2
23	UHS seal ring	1	54	Inner hexagon screw M10×15	2
24	Piston	1	55	Hydraulic power unit	1
25	Guide bushing	1	56	Upper forks arm assembly	1
26	O-ring	1	57	Connect axle	2
27	DH dustproof ring	1	58	Flat washer 12	4
28	Steel cablec circlip for hole	1	59	Spring washer 12	4
29	Lower forks arm assembly	1	60	Hexagon bolt M12×30	4
30	Flat washer 16	8	61	Pin roll	1
31	Wheel	4			

9. BG-770D HARDWARE

Foreword

1. Usage
This section lists the components of BG-770D hydraulic double scissor lift table, including its handle, lift table frame, fork arm, jack and so on.
2. How to book a component
When you need to book any component, you should specify in your order the lift table model, series number, quantity, part material number, and the name of the component. If you have any question concerning the material number, please inform your agent, and make complete supplementary instructions for the component in need.
3. Manual Content
This parts manual includes drawings of the whole assembly or each part of the lift table. These drawings include standard components and additional components.
Each drawing lists out the component number and name, and additional information is provided.
Each exploded drawing represents a component; the listed parts are the repairable ones of that component.
4. Modifications of the lift table is not provided in this manual
The following-up adjustment and the product design changes may result in the revision of the manual, which is not listed in this manual.
5. The meanings of "marks" in this part manual O.D external diameter I.D. internal diameter C. modification Y. breakdown drawing Z. not provided seperately X. main part exchange F. not displayed
6. Model explanation: BG: product code: manual lift table

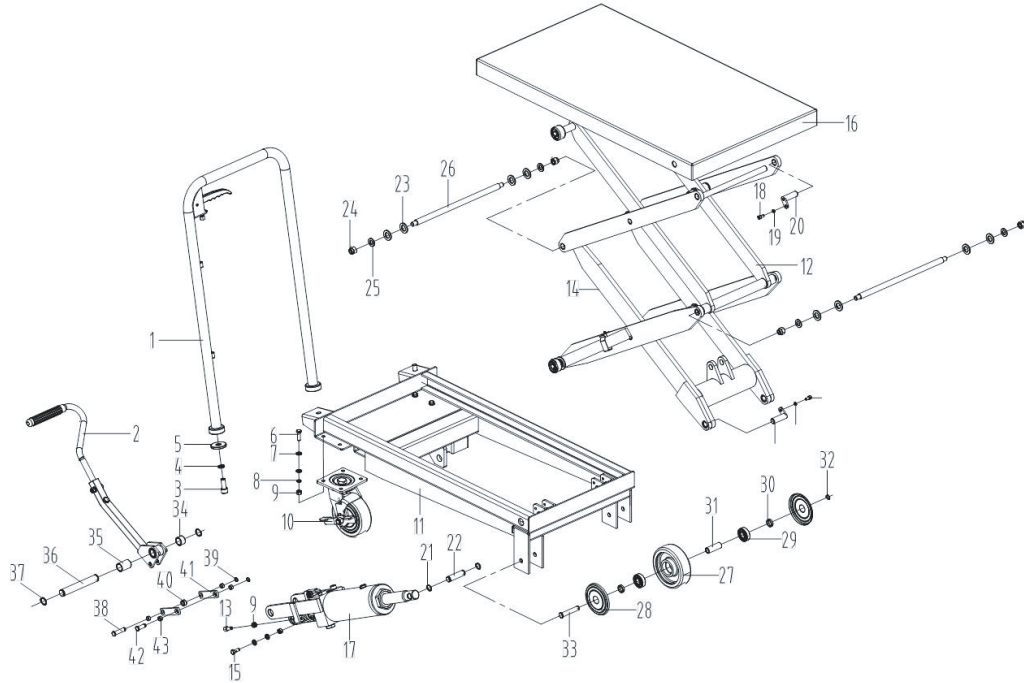


Capacity—770-350Kg-770lbs

List of Wearing Parts

Item NO.	Part name	Part NO.
1	Wheel	0905060004
2	Wheel	0905020104
3	Seal ring 32X45X6	0902060018
4	O-ring 31.5X3.55	0902050059
5	O-ring 7.5X2.65	0902050011
6	O-ring 77.5X3.55	0902050118
7	Seal ring	0902030080
8	O-ring 41.5X4.6	0902050079
9	Dust ring DHS18-26-4.5/6	0902040007
10	Seal ring UHS18-26-5	0902030005
11	O-ring 22.4X2.65	0902050046
12	Seal ring	0902070005
13	O-ring 20X2.65	0902050043
14	O-ring 6.9X1.8	0902050007
15	O-ring 10.6X0.8	0902050020

GB-770D General Assembly

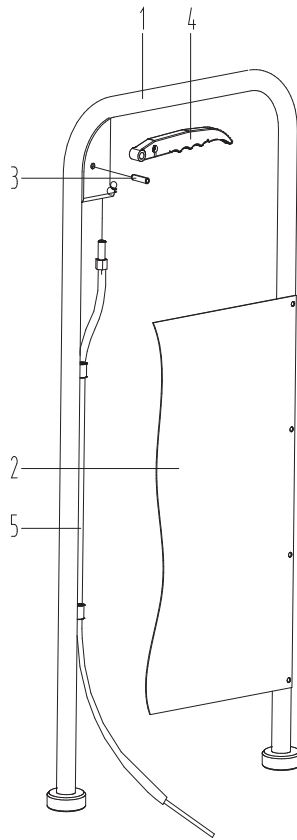


Item NO.	Part NO.	Part name	Specification	Q'ty
1	31070201028	Knob assembly	1340 (1135)	1
2	31020207008	Pedal rod assembly		1
3	0908420264	Screw M12X30		2
4	0908370015	Washer 12		2
5	31010206010	Washer		2
6	0908420031	Screw M8X25		8
7	0908350013	Washer 8		17
8	0908370011	Washer 8		9
9	0908030013	Nut M8		10
10	31070201022	Universal wheel assembly	nylon core PU standard configuration	2
	31070201023	Universal wheel assembly	iron core PU optional	
11	31020204004	Lift table frame body		1
12	31020204003	Upper fork arm assembly		1
13	0901120024	Screw		1
14	31020204002	Lower fork arm assembly		1
15	31050301055	Screw		1
16	31020204005	Table face assembly		1
17	310302008	Jack		1
18	0908240290	Screw M6X12		4
19	0908370007	Washer 6		4
20	0906230012	Pin		4
21	0908320013	Circlip for shaft 16		2
22	0906230013	Pin		1
23	0908350028	Washer 16		8
24	0908010020	Nut M12		4
25	0908350021	Washer 12		4
26	0906230018	Shaft		2

BG-770D/BG-770DB MOBILE LIFT TABLE —OPERATOR'S MANUAL/PARTS LIST

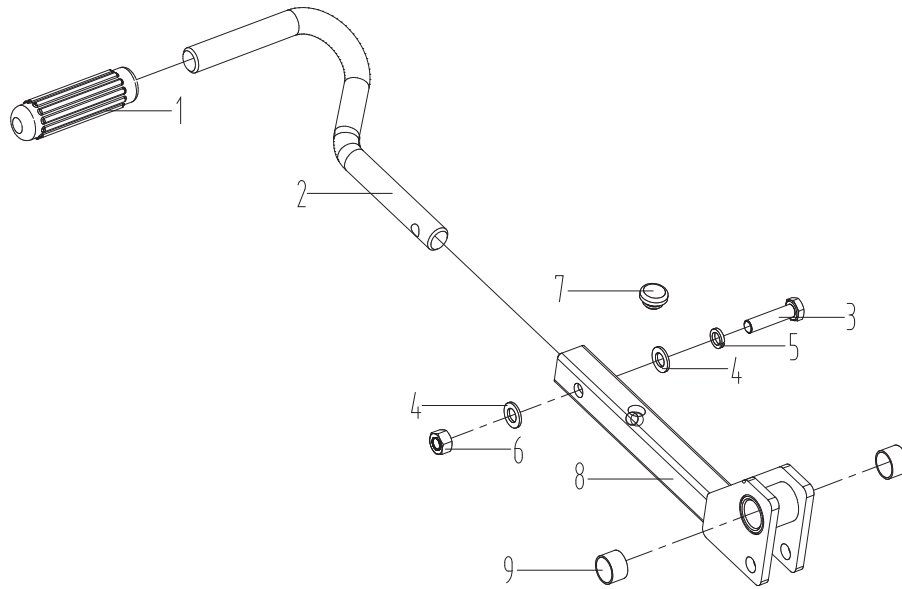
Item NO.	Part NO.	Part name	Specification	Q'ty
27	0905060004	Wheel nylon core PU (Standard Configuration)	nylon core PU	2
	0905020104	Wheel iron core PU (Optional)	iron core PU	
28	0909030017	Trimming matching iron core PU (Optional)	matching iron core PU	4
29	0907020004	Bearing 6203-2RS		4
30	0909020002	Bush		4
31	0909220009	Core pipe		2
32	0908320006	Circlip for shaft 12		2
33	0906230011	Shaft		2
34	0909020016	Retaining ring		1
35	0909020018	Retaining ring		1
36	0906230021	Pin		1
37	0908320018	Circlip for shaft 20		2
38	0906230010	Pin		1
39	0908320004	Circlip for shaft 10		1
40	0909010008	Lining ring		1
41	0909040025	Connecting plate		2
42	0906230009	Shaft		1
43	0907040003	Bearing SF-1-10.06		4

Knob Assembly
Part# 31070201028



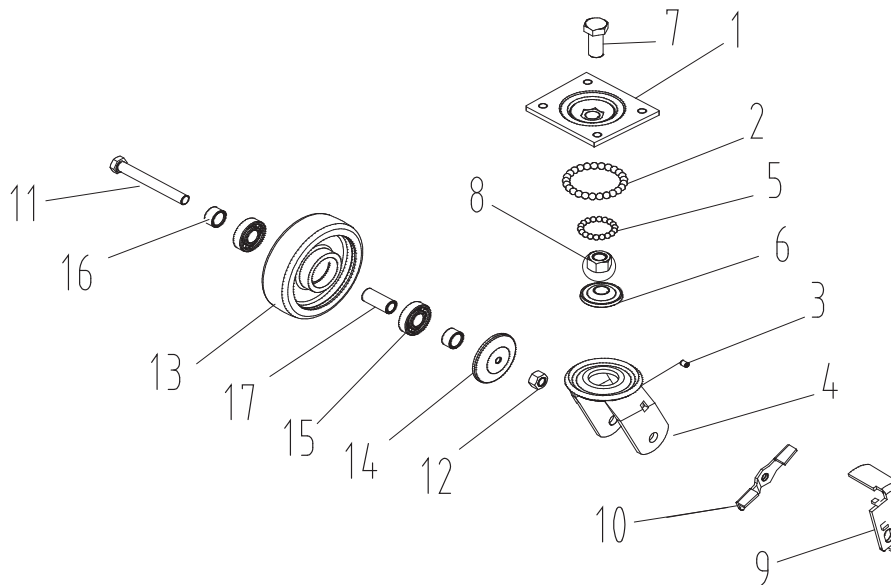
Item NO.	Part NO.	Part name	Q'ty
1	1132450002	Handle assembly	1
2	31050302008	Guard plate for EU type (safe type) Not provided	0
3	0908500038	Pin 6X30	1
4	0909170004	Knob	1
5	0909180026	Shaft	1

Pedal Rod Assembly
Part# 31020207008



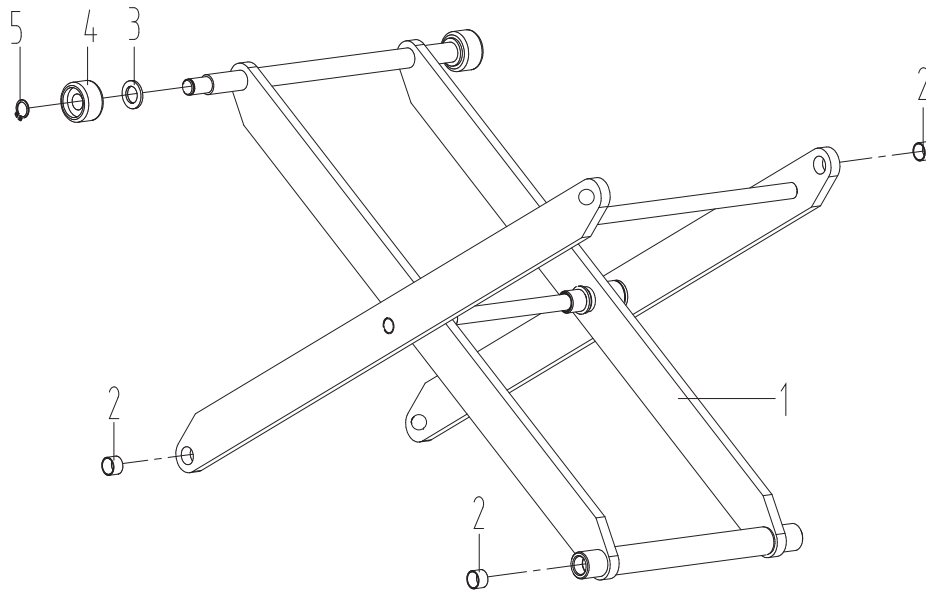
Item NO.	Part NO.	Part name	Q'ty
1	0904120002	Sleeve	1
2	0906230097	Pedal rod	1
3	0908420034	Screw M8X35	1
4	0908350013	Washer 8	2
5	0908370011	Washer 8	1
6	0908030013	Nut M8	1
7	0904120004	Crash pad	1
8	31020207018	Square rod assembly	1
9	0907040029	Bearing SF-1-20.12	2

Universal Wheel Assembly
Part# 31070201022 nylon core PU standard configuration or
Part# 31070201023 iron core PU optional



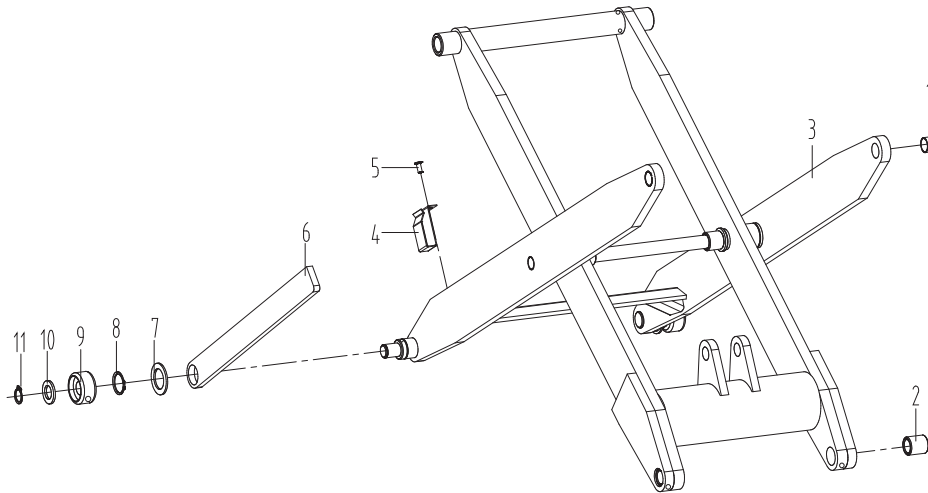
Item NO.	Part NO.	Part name	Specification	Q'ty
1	0905080005 (Provided in whole)	Upper cover plate		1
2		Steel ball 8		25
3		Oiler M6		1
4		Wheel carriage assembly		1
5		Steel ball 1/4		18
6		Lower raceway plate		1
7		Screw M16X25		1
8		Nut M16		1
9		Brake plate		1
10		Pedal		1
11		Screw M12X100		1
12		Nut M12		1
13	0905020104	Wheel (Optional)	QT450+PU	1
	0905060004	Wheel (Standard Configuration)	MC nylon+PU	
14	0909030017	Trimming		2
15	0907020004	Bearing 6203-2RS		2
16	0909020007	Retaining ring		2
17	0909220010	Shaft		1

Upper Fork Arm Assembly
Part# 31020204003



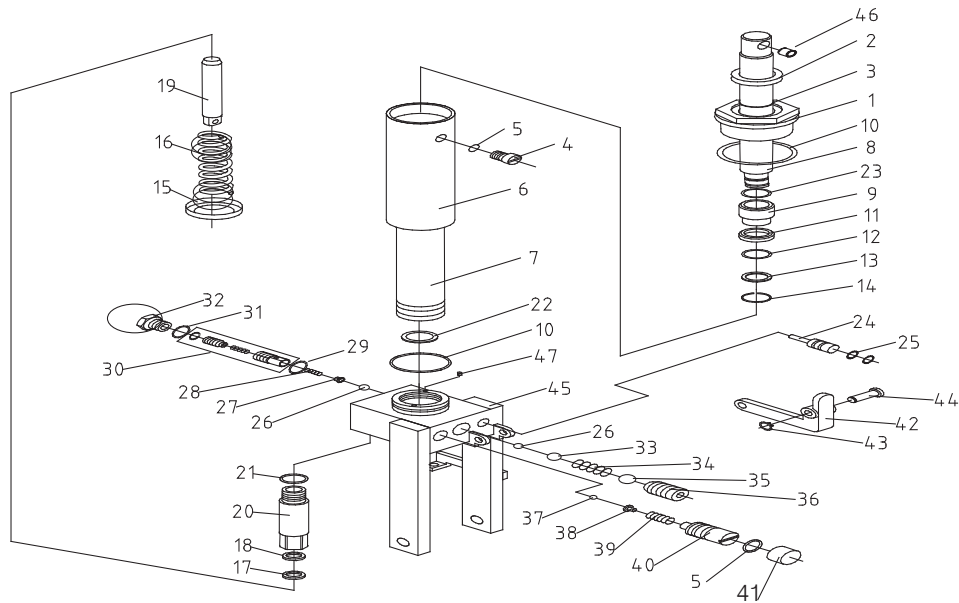
Item NO.	Part NO.	Part name	Q'ty
1	31020201064	Upper fork arm welding	1
2	0907040014	Bearing SF-1-16.12	6
3	0909020002	Bush	2
4	0909120003	Upper pulley	2
5	0908320013	Circlip for shaft 16	2

Lower Fork Arm Assembly
Part# 31020204002



Item NO.	Part NO.	Part name	Q'ty
1	0907040014	Bearing SF-1-16.12	4
2	0907040090	Bush	2
3	31020201064	Lower fork arm welding	1
4	0909040019	Lock catch	2
5	0908280012	Screw M5X8	2
6	1199400039	Support rod	2
7	0909030007	Washer	2
8	0908320062	Circlip for shaft 24	2
9	0909120004	Lower pulley	2
10	0908360004	Washer 16	2
11	0908320013	Circlip for shaft 16	2

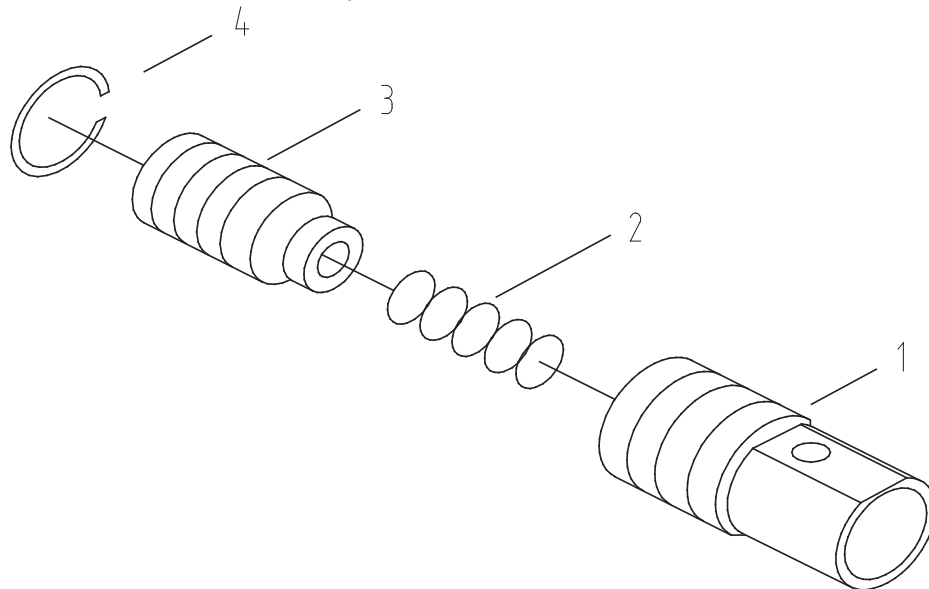
Jack Assembly
Part# 310302008



Item NO.	Part NO.	Part name	Specification	Q'ty
1	1109400003	Hood		1
2	0902060018	Seal ring 32X45X6		1
3	0902050059	O-ring 31.5X3.55		1
4	0901120023	Screw		1
5	0902050011	O-ring 7.5X2.65		2
6	1131400004	Sleeve		1
7	1113400004	Oil cylinder		1
8	0901010049	Piston rod		1
9	1112400003	Piston		1
10	0902050118	O-ring 77.5X3.55		2
11	0902030080	Seal ring		1
12	0902050079	O-ring 41.5X4.6		1
13	0909030004	Washer		1
14	0908330002	Circlip for shaft 25		1
15	0909060002	Spring seat		1
16	0903130009	Spring		1
17	0902040007	Dust ring DHS18-26-4.5/6		1
18	0902030005	Seal ring UHS18-26-5		1
19	0901030015	Pump core		1
20	0901020021	Pump cylinder		1
21	0902050046	O-ring 22.4X2.65		1
22	0902070005	Seal ring		1
23	0902050043	O-ring 20X2.65		1
24	0901090011	Striker pin		1
25	0902050007	O-ring 6.9X1.8		2
26	0907010012	Steel ball 1/4		2
27	0901100013	Spring seat		1
28	0903130021	Spring		1
29	0902050020	O-ring 10.6X0.8		1

Item NO.	Part NO.	Part name	Specification	Q'ty
30	31030401271	Damping valve	aperture specification 0.8	1
31	0902010009	Washer 20		1
32	0901120015	Screw		1
33	0907010015	Steel ball 3/8		1
34	0903130012	Spring		1
35	0907010021	Steel ball 1/2		1
36	0908220005	Screw M16X18		1
37	0907010009	Steel ball 3/16		1
38	0901110020	Relief valve seat		1
39	0903130005	Spring		1
40	0901120002	Screw		1
41	0901150012	Guard sleeve		1
42	1120460001	Lever		1
43	0908320003	Circlip for shaft 8		1
44	0906040001	Shaft		1
45	31020207006	Base assembly		1
46	0907040018	Bearing SF-1-16.20		1
47	0540059	Magnetic steel 10X3		1

Damping Valve
Part# 31030401271

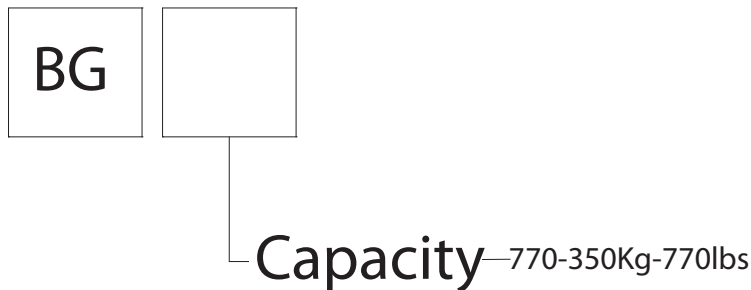


Item NO.	Part NO.	Part name	Specification	Q'ty
1	0901070009	Valve body		1
2	0903130028	Spring		1
3	0901080008	Valve core	aperture specification 0.8	1
4	0908310004	Circlip for hole 9		1

10. BG-770DB HARDWARE

Foreword

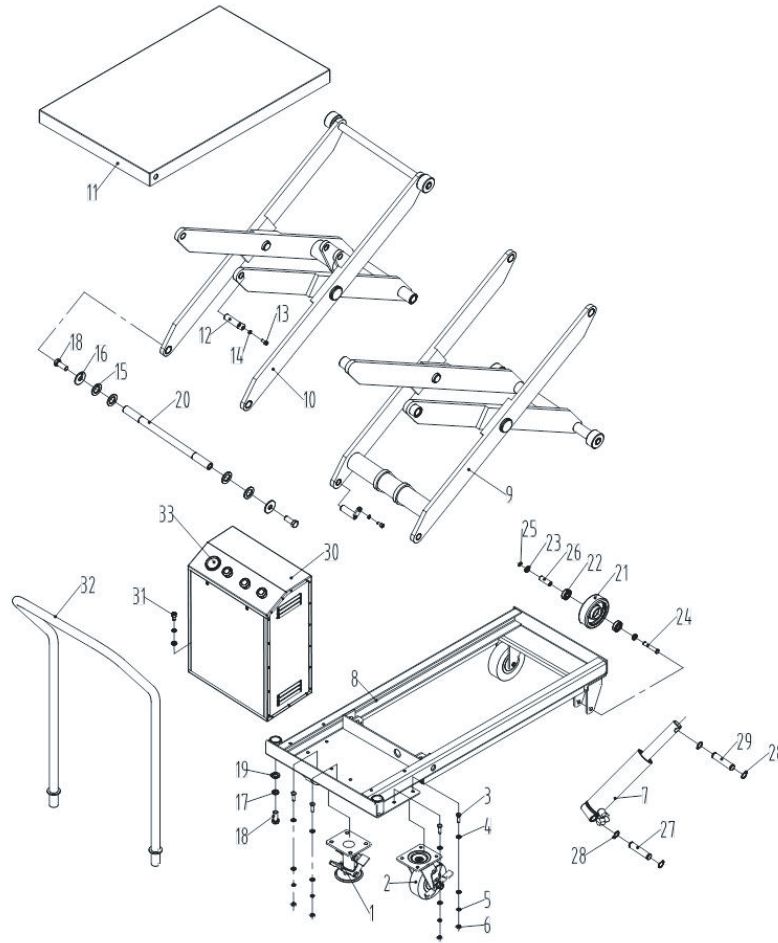
1. Usage
This section lists the components of BG-770DB electric double scissor lift table, including its handle, lift table frame, fork arm, jack and so on.
2. How to book a component
When you need to book any component, you should specify in your order the lift table model, series number, quantity, part material number, and the name of the component. If you have any question concerning the material number, please inform your agent, and make complete supplementary instructions for the component in need.
3. Manual Content
This parts manual includes drawings of the whole assembly or each part of the lift table. These drawings include standard components and additional components.
Each drawing lists out the component number and name, and additional information is provided.
Each exploded drawing represents a component; the listed parts are the repairable ones of that component.
4. Modifications of the lift table is not provided in this manual
The following-up adjustment and the product design changes may result in the revision of the manual, which is not listed in this manual.
5. The meanings of "marks" in this part manual O.D external diameter I.D. internal diameter C. modification Y. breakdown drawing Z. not provided seperately X. main part exchange F. not displayed
6. Model explanation: BG: product code: manual lift table



List of Wearing Parts

Item NO.	Part name	Part NO.
1	Wheel	0905060004
2	Wheel	0905020104
3	Dust ring DHS40-48-5/6.5	0902040025
4	Seal ring UHS40-50-6	0902030034
5	Guide tape BST5918-18-2.5 Ø43	31060501084
6	O-ring 54.5X3.55	0902050094
7	Guide tape BST5909-10-2.5 Ø40	31060501085

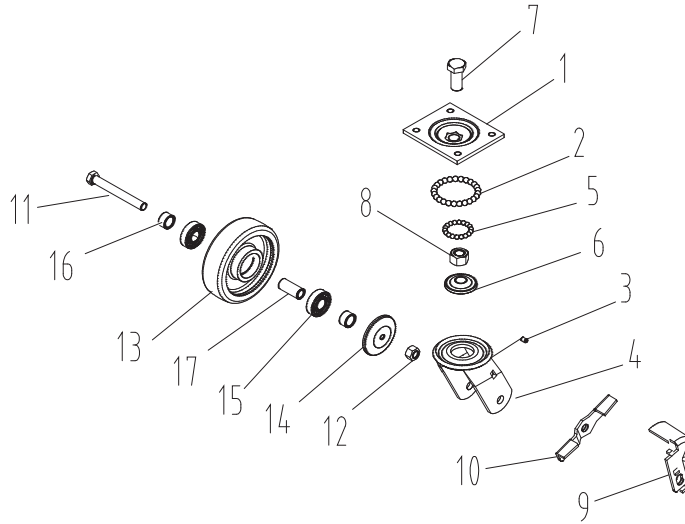
GB-770DB General Assembly



Item NO.	Part NO.	Part name	Specification	Q'ty
1	31060201152	Brake		1
2	31070201022	Universal wheel assembly standard configuration	nylon core PU standard configuration	2
	31070201023	Universal wheel assembly optional	iron core PU optional	
3	0908420031	Screw M8X25		12
4	0908350013	Washer 8		28
5	0908370011	Washer 8		16
6	0908030013	Nut M8		12
7	31030401272	Oil cylinder assembly		1
8	31020402001	Lift table frame body		1
9	31020402003	Lower fork arm assembly		1
10	31020402006	Upper fork arm assembly		1
11	31020402005	Table face assembly		1
12	0906230012	Pin		4
13	0908240019	Screw M6X12		4
14	0908370007	Washer 6		4
15	0908350032	Washer 20		8
16	0908360003	Washer 12		4
17	0908370015	Washer 12		2
18	0908420072	Screw M12X30		6

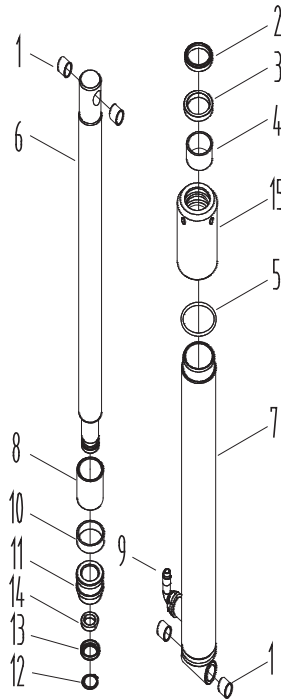
Item NO.	Part NO.	Part name	Specification	Q'ty
19	0908350021	Washer 12		6
20	31050402001	Shaft		2
21	0905060004	Wheel (standard configuration)	nylon core PU	2
	0905020104	Wheel (optional)	iron core PU	
22	0907020004	Bearing 6203-2RS		4
23	0909020002	Bush		4
24	0906230011	Shaft		2
25	0908320006	Circlip for shaft 12		2
26	0909220009	Core pipe		2
27	31050401002	Pin		1
28	0908320013	Circlip for shaft 16		4
29	31050402003	Pin		1
30	51030503015	Electric part box assembly		1
31	0908240043	Screw M8X14		4
32	1132750002	Handle assembly		1
33		Electrical system		1

Universal Wheel Assembly
 Part# 31070201022 nylon core PU standard configuration or
 Part# 31070201023 iron core PU optional



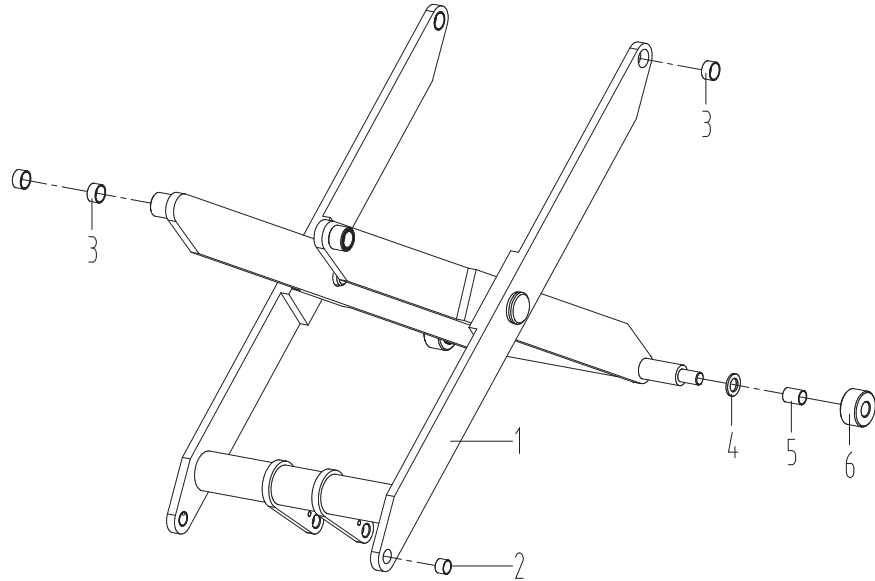
Item NO.	Part NO.	Part name	Specification	Q'ty
1	0905080005 (Provided in whole)	Upper cover plate		1
2		Steel ball 8		25
3		Oiler M6		1
4		Wheel carriage assembly		1
5		Steel ball 1/4		18
6		Lower raceway plate		1
7		Screw M16X25		1
8		Nut M16		1
9		Brake plate		1
10		Pedal		1
11		Screw M12X100		1
12		Nut M12		1
13	0905020104	Wheel (optional)	QT450+PU	1
	0905060004	Wheel (standard configuration)	MC nylon+PU	
14	0909030017	Trimming		2
15	0907020004	Bearing 6203-2RS		2
16	0909020007	Retaining ring		2
17	0909220010	Shaft		1

Oil Cylinder Assembly
Part# 31030401272



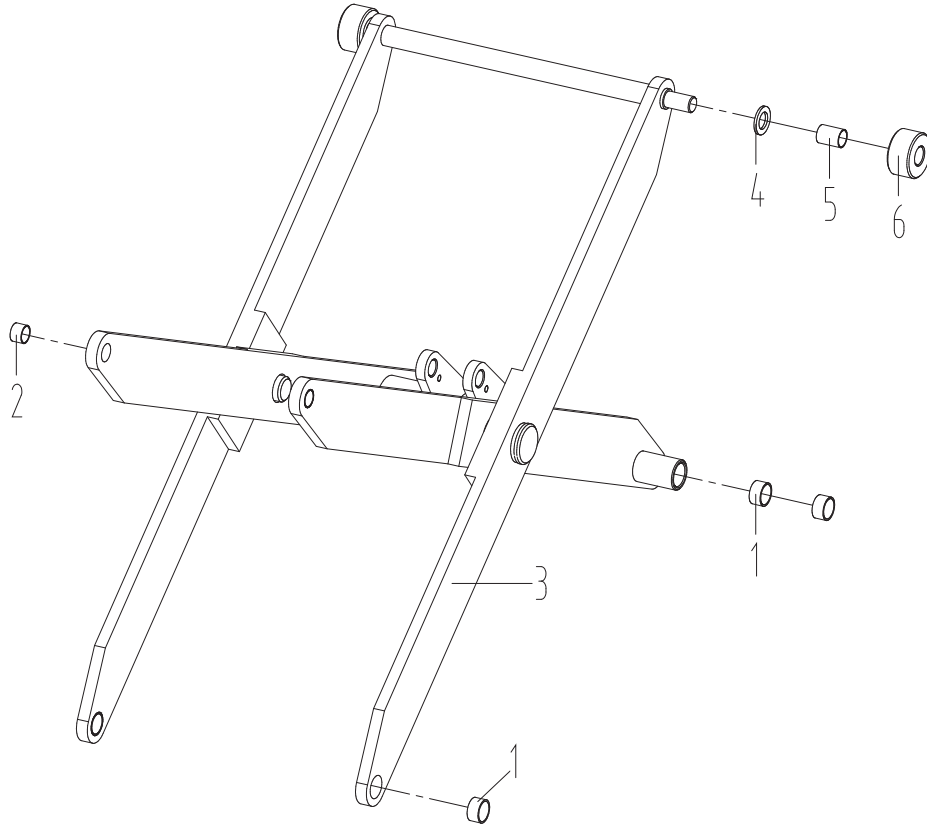
Item NO.	Part NO.	Part name	Specification	Q'ty
1	0907040016	Bearing SF-1-16.16		4
2	0902040025	Dust ring DHS40-48-5/6.5		1
3	0902030034	Seal ring UHS40-50-6		1
4	31060501084	Guide tape BST5918-18-2.5	Ø43	1
5	0902050094	O-ring 54.5X3.55		1
6	0901010063	Piston rod		1
7	51030507193	Oil cylinder assembly		1
8	31050402007	Bush		1
9	061318162	Joint		1
10	31060501085	Guide tape BST5909-10-2.5	Ø40	1
11	31050402028	Piston		1
12	0908320026	Circlip for shaft 30		1
13	0909210007	Semi-ring sleeve		1
14	0909210006	Semi-ring		
15	31050402029	Hood		1

Lower Fork Arm Assembly
Part# 31020402003



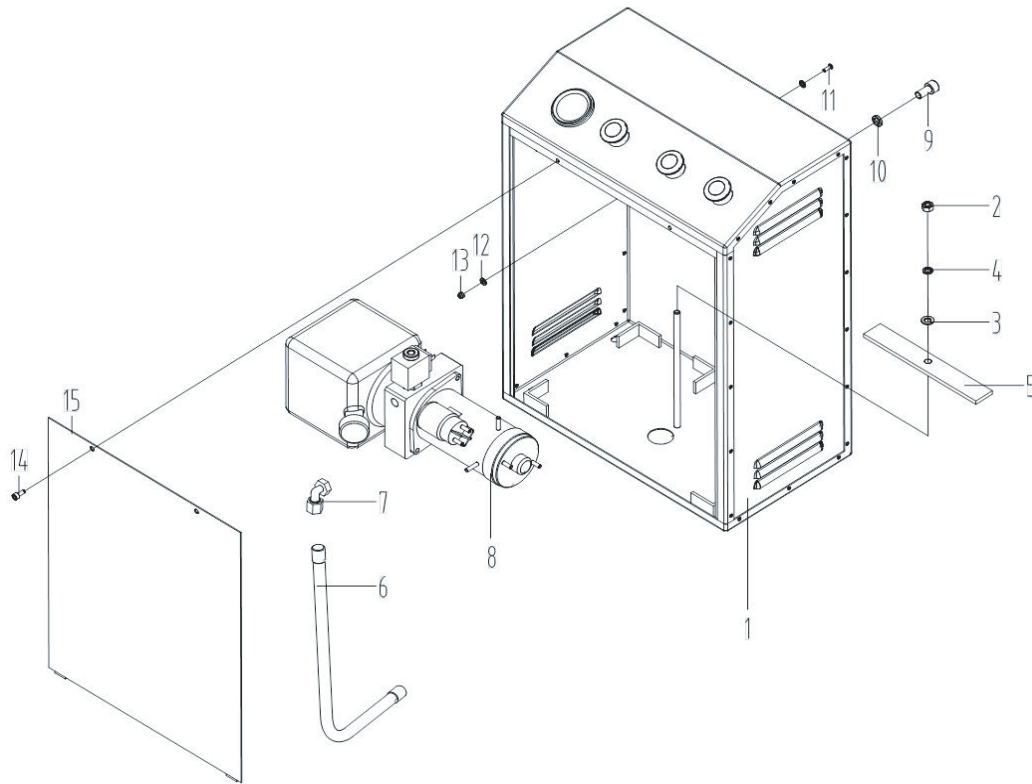
Item NO.	Part NO.	Part name	Q'ty
1	51030503018	Lower fork arm welding	2
2	0907040014	Bearing SF-1-16.12	2
3	0907040024	Bearing SF-1-20.12	6
4	0908360004	Washer 16	2
5	0907040019	Bearing SF-1-16.24	2
6	31050402010	Pulley	2

Upper Fork Arm Assembly
Part# 31020402006



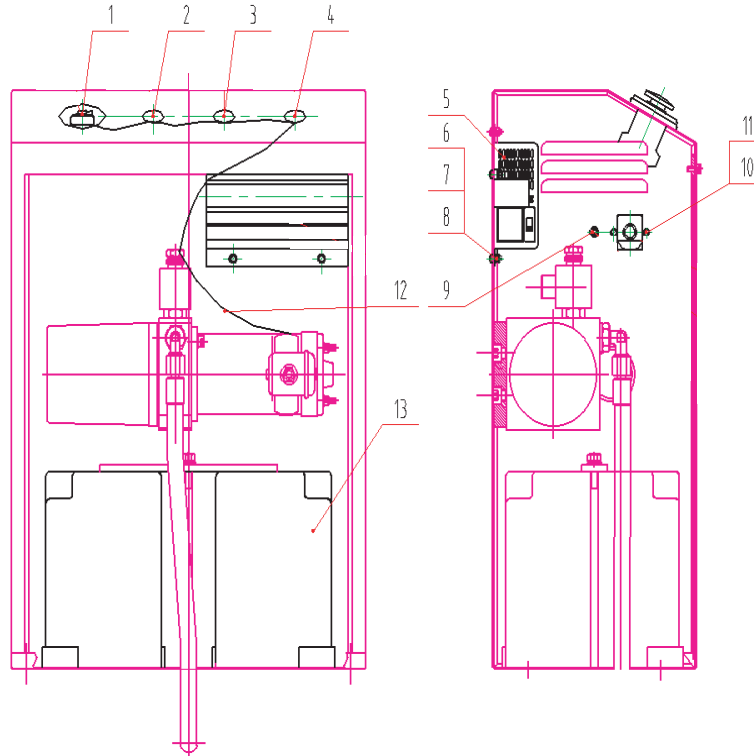
Item NO.	Part NO.	Part name	Q'ty
1	907040024	Bearing SF-1-20.12	6
2	0907040014	Bearing SF-1-16.12	2
3	51030503019	Upper fork arm welding	1
4	0908360004	Washer 16	2
5	0907040019	Bearing SF-1-16.24	2
	31050402010	Pulley	2

Electric Part Box Assembly
Part# 51030503015



Item NO.	Part NO.	Part name	Q'ty
1	31020401006	Casing assembly	1
2	0908030013	Nut M8	1
3	0908350013	Washer 8	1
4	0908370011	Washer 8	1
5	31050401028	Platen	1
6	061325023	Oil pipe	1
7	061309050	Joint	1
8	0602323	Hydraulic pump	1
9	0908240070	Screw M10X20	2
10	0908370014	Washer 10	2
11	0908280059	Screw M4X12	4
12	0908350008	Washer 4	8
13	0908010002	Nut M4	4
14	0908280013	Screw M5X10	2
15	31020401005	Door	1

Electrical System



Item NO.	Part NO.	Part name	Q'ty
1	060701530	Instrument	1
2	060907025	Emergency stop button switch TN3BKR-1C	1
3	060902016	Button switch LAY40-10MU	1
4	060902017	Button switch LAY40-10MD	1
5	0606078	Charger	1
6	0908280059	Screw M4X12	4
7	0908350008	Washer 4	4
8	0908010002	Nut M4	4
9	060803005	LED seat (5mm)	1
10	0908270022	Screw M3X16	2
11	0908030009	Nut M3	2
12	52050100136	Wiring harness	1
13	0605049	12V/33AH FM/BB1233T	2

BLUE GIANT[®]
BLUE GIANT EQUIPMENT CORPORATION

Corporate 410 Admiral Blvd
Mississauga, ON, Canada L5T 2N6
t 905.457.3900 f 905.457.2313

USA 9201 National Turnpike
Louisville, KY 40118
www.bluegiant.com